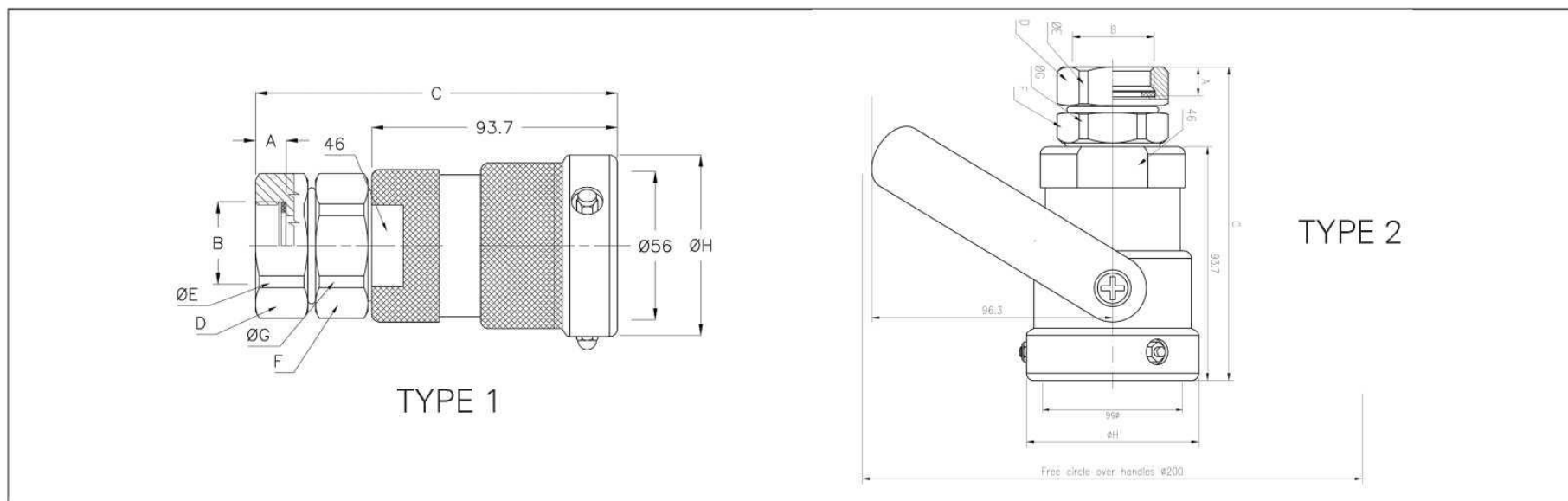


## TODO-MATIC Hose units - coupling Ø 56



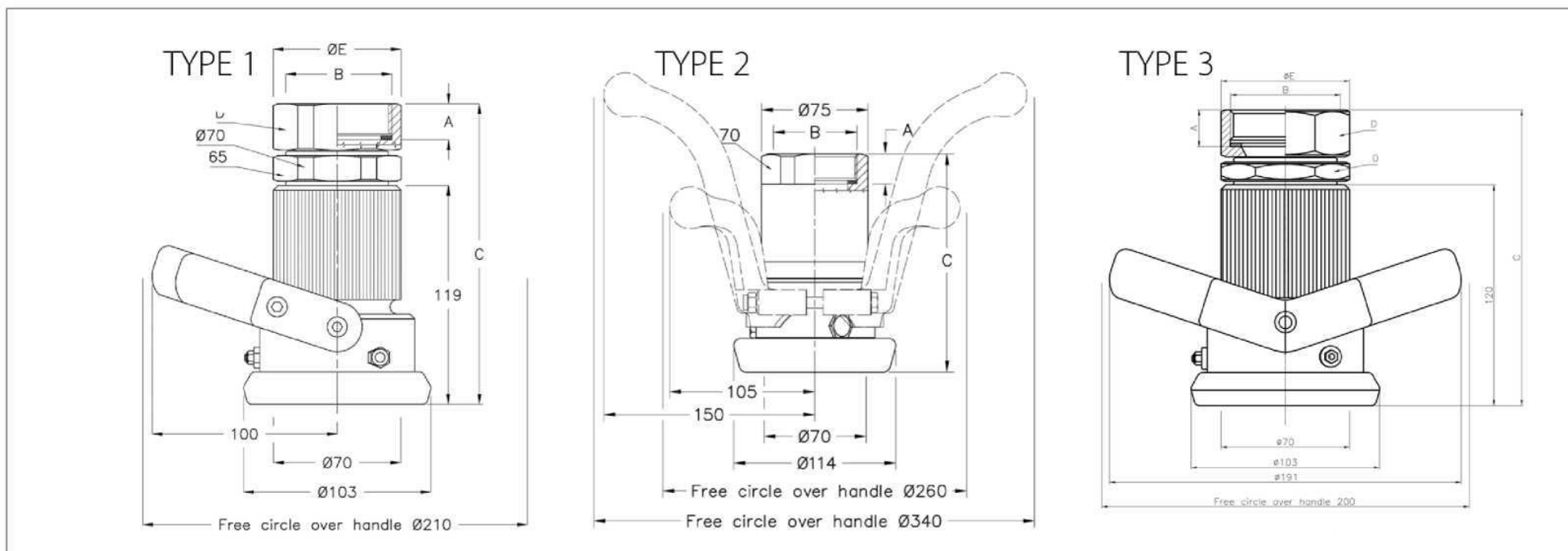
Max coupling pressure: 7 bar / 102 psi.

\* NPT thread is a tapered pipe thread, tightening on the tread. Therefore there is no flat seal.

\*\* Sealing material, see page 4.

DN	NPS	D.Ø mm	B (connection)	Material	Code No.	Weight	WP Bar/Psi	TP Bar/Psi	Type	A	C	D	E	F	G	H
20	¾	56	BSP (ISO 228-G 3/4)	Aluminium	7075-14**	0,6 kg / 1,3 lb	10 / 145	15 / 220	1	12	125	42	44	42	44	69
20	¾	56	BSP (ISO 228-G 3/4)	Brass	7075-24**	1,6 kg / 3,5 lb	10 / 145	15 / 220	1	12	125	42	44	42	44	69
20	¾	56	BSP (ISO 228-G 3/4)	Stainless Steel	7075-44**	1,4 kg / 3,1 lb	25 / 365	37,5 / 545	1	12	125	42	44	42	44	63
20	¾	56	NPT (ANSI B2.1) *	Aluminium	7454-14**	0,6 kg / 1,3 lb	10 / 145	15 / 220	1	18	131	42	44	42	44	69
20	¾	56	NPT (ANSI B2.1) *	Brass	7454-24**	1,5 kg / 3,3 lb	10 / 145	15 / 220	1	18	131	42	44	42	44	69
20	¾	56	NPT (ANSI B2.1) *	Stainless Steel	7454-44**	1,5 kg / 3,3 lb	25 / 365	37,5 / 545	1	18	131	42	44	42	44	63
25	1	56	BSP (ISO 228-G 1)	Aluminium	7100-14**	0,6 kg / 1,3 lb	10 / 145	15 / 220	1	12	125	42	44	42	44	69
25	1	56	BSP (ISO 228-G 1)	Brass	7100-24**	1,5 kg / 3,3 lb	10 / 145	15 / 220	1	12	125	42	44	42	44	69
25	1	56	BSP (ISO 228-G 1)	Stainless Steel	7100-44**	1,5 kg / 3,3 lb	25 / 365	37,5 / 545	1	12	125	42	44	42	44	63
25	1	56	BSP (ISO 228-G 1)	Stainless Steel	7100H-44**	1,8 kg / 4,0 lb	25 / 363	37,5 / 544	2	12	125	42	44	42	44	63
25	1	56	NPT (ANSI B2.1) *	Aluminium	7455-14**	0,6 kg / 1,3 lb	10 / 145	15 / 220	1	21	134	42	44	42	44	69
25	1	56	NPT (ANSI B2.1) *	Brass	7455-24**	1,5 kg / 3,3 lb	10 / 145	15 / 220	1	21	134	42	44	42	44	69
25	1	56	NPT (ANSI B2.1) *	Stainless Steel	7455-44**	1,4 kg / 3,1 lb	25 / 365	37,5 / 545	1	21	134	42	44	42	44	63
32	1	56	NPT (ANSI B2.1) *	Stainless Steel	7455H-44**	1,7 kg / 3,8 lb	25 / 365	37,5 / 545	2	21	134	42	44	42	44	63
32	1¼	56	BSP (ISO 228-G 1 1/4)	Aluminium	7125-14**	0,6 kg / 1,3 lb	10 / 145	15 / 220	1	16	136	50	54	50	54	69
32	1¼	56	BSP (ISO 228-G 1 1/4)	Brass	7125-24**	1,5 kg / 3,3 lb	10 / 145	15 / 220	1	16	136	50	54	50	54	69
32	1¼	56	BSP (ISO 228-G 1 1/4)	Stainless Steel	7125-44**	1,5 kg / 3,3 lb	25 / 365	37,5 / 545	1	16	136	50	54	50	54	63
32	1¼	56	NPT (ANSI B2.1) *	Aluminium	7456-14**	0,6 kg / 1,3 lb	10 / 145	15 / 220	1	21	141	50	54	50	54	69
32	1¼	56	NPT (ANSI B2.1) *	Brass	7456-24**	1,5 kg / 3,3 lb	10 / 145	15 / 220	1	21	141	50	54	50	54	69
32	1¼	56	NPT (ANSI B2.1) *	Stainless Steel	7456-44**	1,4 kg / 3,1 lb	25 / 365	37,5 / 545	1	21	141	50	54	50	54	63

## TODO-MATIC Hose units - coupling Ø 70



Max coupling pressure: 7 bar / 102 psi.

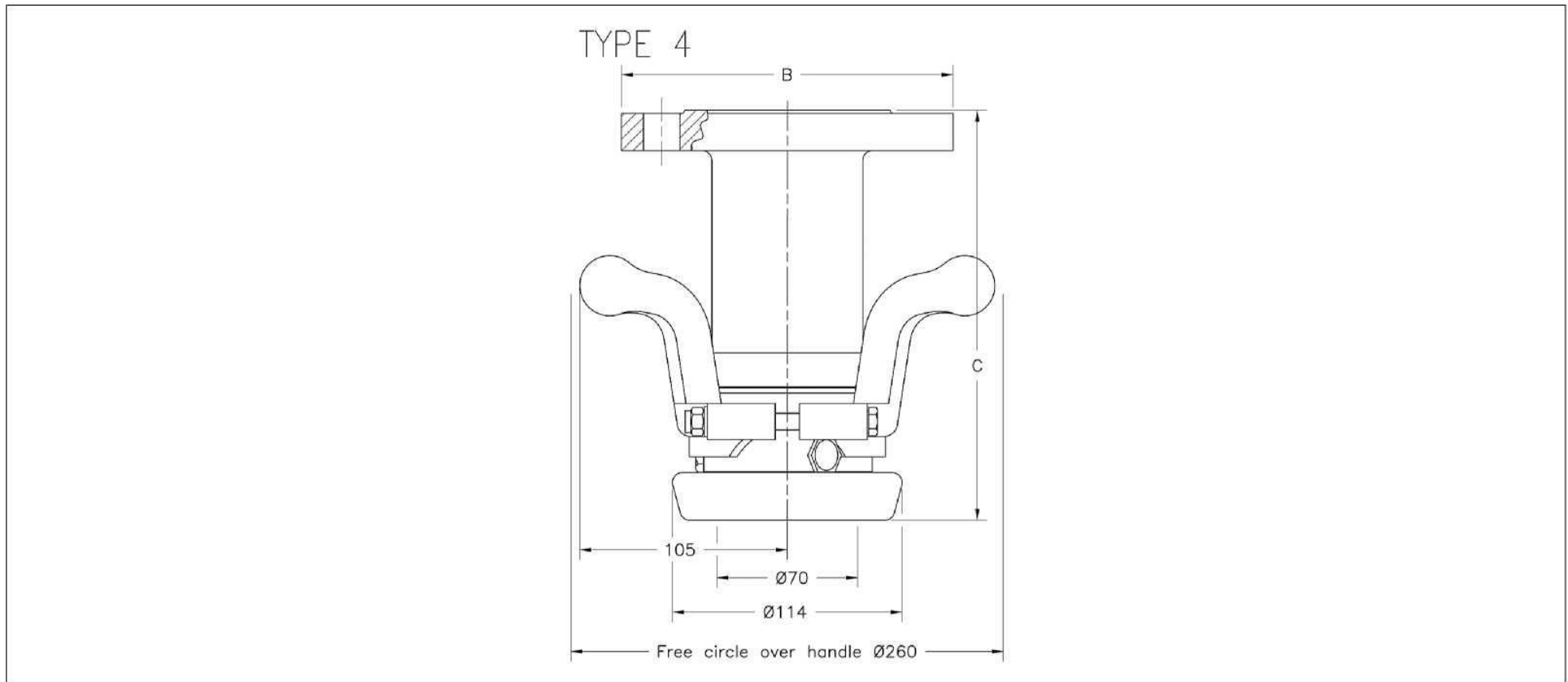
\*\*Sealing material, see page 4

\* NPT thread is a tapered pipe thread, tightening on the tread. Therefore there is no flat seal.

\*\*\* Is available with both short and long handles.

DN	NPS	D.Ø mm	B (connection)	Material	Code No.	Weight	WP Bar/Psi	TP Bar/Psi	Type	A	C	D	E	F	G	H
40	1½	70	BSP (ISO 228-G 1 1/2)	Aluminium	5005A-14**	1,2 kg / 2,6 lb	10 / 145	15 / 218	1	18	159	60	67	-	-	-
40	1½	70	BSP (ISO 228-G 1 1/2)	Brass	5005A-24**	2,8 kg / 6,2 lb	10 / 145	15 / 220	1	18	159	60	67	-	-	-
40	1½	70	BSP (ISO 228-G 1 1/2)	Stainless Steel	9150G-44**	2,9 kg / 6,4 lb	25 / 365	37,5 / 545	1	18	159	60	67	-	-	-
40	1½	70	NPT (ANSI B2.1) *	Aluminium	7468A-14**	1,2 kg / 2,6 lb	10 / 145	15 / 218	1	21	161	60	67	-	-	-
40	1½	70	NPT (ANSI B2.1) *	Brass	7468A-24**	2,8 kg / 6,2 lb	10 / 145	15 / 220	1	21	161	60	67	-	-	-
40	1½	70	NPT (ANSI B2.1) *	Stainless Steel	9151G-44**	2,9 kg / 6,4 lb	25 / 365	37,5 / 545	1	21	161	60	67	-	-	-
50	2	70	BSP (ISO 228-G 2)	Aluminium	5006A-14**	1,2 kg / 2,6 lb	10 / 145	15 / 218	1	20	160	65	70	-	-	-
50	2	70	BSP (ISO 228-G 2)	Brass	5006A-24**	2,8 kg / 6,2 lb	10 / 145	15 / 220	1	20	160	65	70	-	-	-
50	2	70	BSP (ISO 228-G 2)	Stainless Steel	9200G-44**	3,0 kg / 6,6 lb	25 / 365	37,5 / 545	1	20	160	65	70	-	-	-
50	2	70	NPT (ANSI B2.1) *	Aluminium	7469A-14**	1,2 kg / 2,6 lb	10 / 145	15 / 218	1	21,5	162	65	70	-	-	-
50	2	70	NPT (ANSI B2.1) *	Brass	7469A-24**	2,8 kg / 6,2 lb	10 / 145	15 / 220	1	21,5	162	65	70	-	-	-
50	2	70	NPT (ANSI B2.1) *	Stainless Steel	9201G-44**	2,9 kg / 6,4 lb	25 / 365	37,5 / 545	1	21,5	162	65	70	-	-	-
50	2	70	BSP (ISO 228-G 2)	Stainless Steel	9209-44**	3,4 kg / 7,5 lb	25 / 365	37,5 / 545	2***	20	154	-	-	-	-	-
50	2	70	NPT (ANSI B2.1) *	Stainless Steel	9205-44**	3,4 kg / 7,5 lb	25 / 365	37,5 / 545	2***	21,5	154	-	-	-	-	-
50	2	70	BSP (ISO 228-G 2)	Stainless Steel	9160G-44**	3,0 kg / 6,6 lb	25 / 363	37,5 / 544	3	20	161	65	70	-	-	-

## TODO-MATIC Hose units - coupling Ø 70



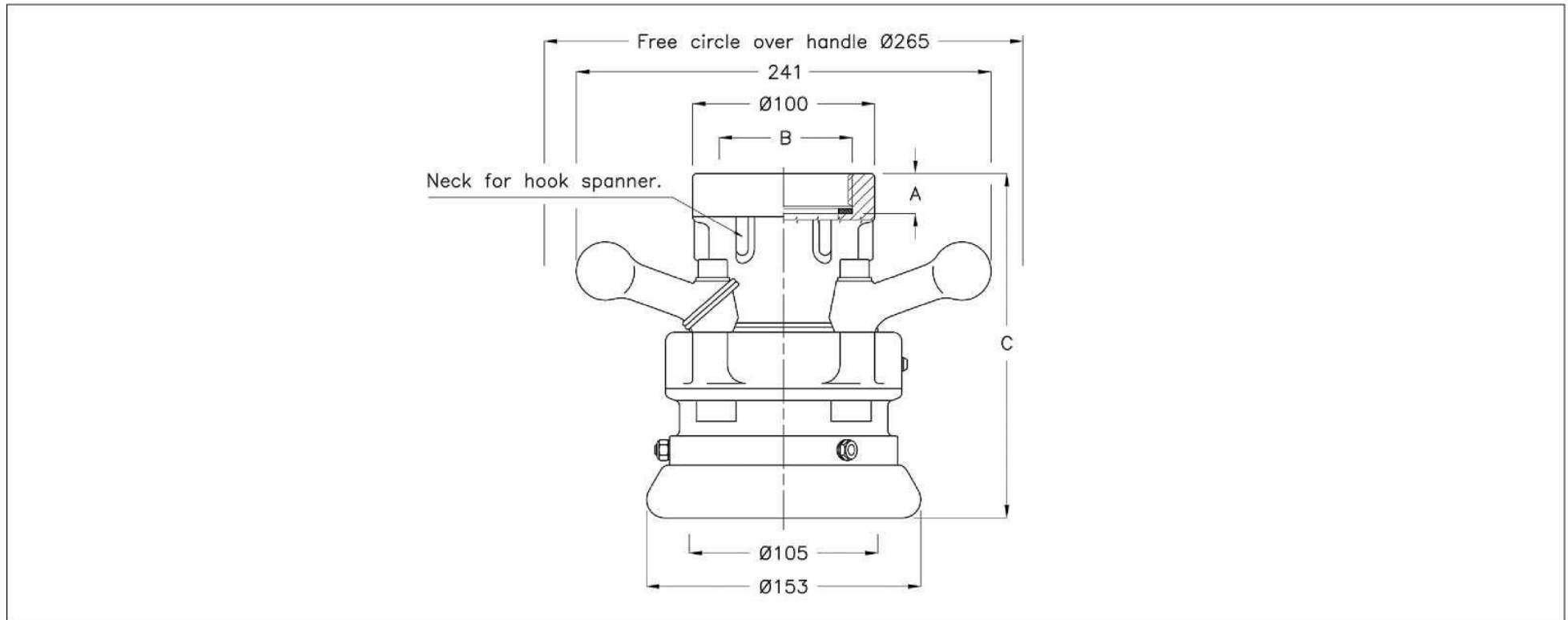
Max coupling pressure: 7 bar / 102 psi.

\*\* Sealing material, see page 4

DN	NPS	D.Ø mm	B (connection)	Material	Code No.	Weight	WP Bar/Psi	TP Bar/Psi	Type	A	C	D	E	F	G	H
40	1½	70	EN 1092-1 PN 25/40 Type B	Stainless Steel	9167-44**	7,0 kg / 15,4 lb	25 / 365	37,5 / 545	-	-	204	-	-	-	-	-
50	2	70	EN 1092-1 PN 10/16 Type D	Stainless Steel	9078-44**	7,0 kg / 15,4 lb	16 / 232	37,5 / 545	-	-	204	-	-	-	-	-
50	2	70	EN 1092-1 PN 25/40 Type F	Stainless Steel	9206-44**	7,0 kg / 15,4 lb	25 / 365	37,5 / 545	-	-	206	-	-	-	-	-
50	2	70	ANSI B16.5 2" Class 300	Stainless Steel	9207-44**	7,0 kg / 15,4 lb	25 / 365	37,5 / 545	-	-	206	-	-	-	-	-
50	2	70	ANSI B16.5 2" Class 150	Stainless Steel	9208-44**	7,0 kg / 15,4 lb	16 / 232	37,5 / 545	-	-	203	-	-	-	-	-
50	2	70	EN 1092-1 PN 10/16 Type B	Stainless Steel	9216-44**	7,0 kg / 15,4 lb	16 / 232	37,5 / 545	-	-	202	-	-	-	-	-
50	2	70	EN 1092-1 PN 25/40 TypeB	Stainless Steel	9217-44**	7,0 kg / 15,4 lb	25 / 365	37,5 / 545	-	-	204	-	-	-	-	-
50	2	70	EN 1092-1 PN 25/40 Type C	Stainless Steel	9077-44**	7,0 kg / 15,4 lb	25 / 365	37,5 / 545	-	-	204	-	-	-	-	-



## TODO-MATIC Hose units - coupling Ø 105



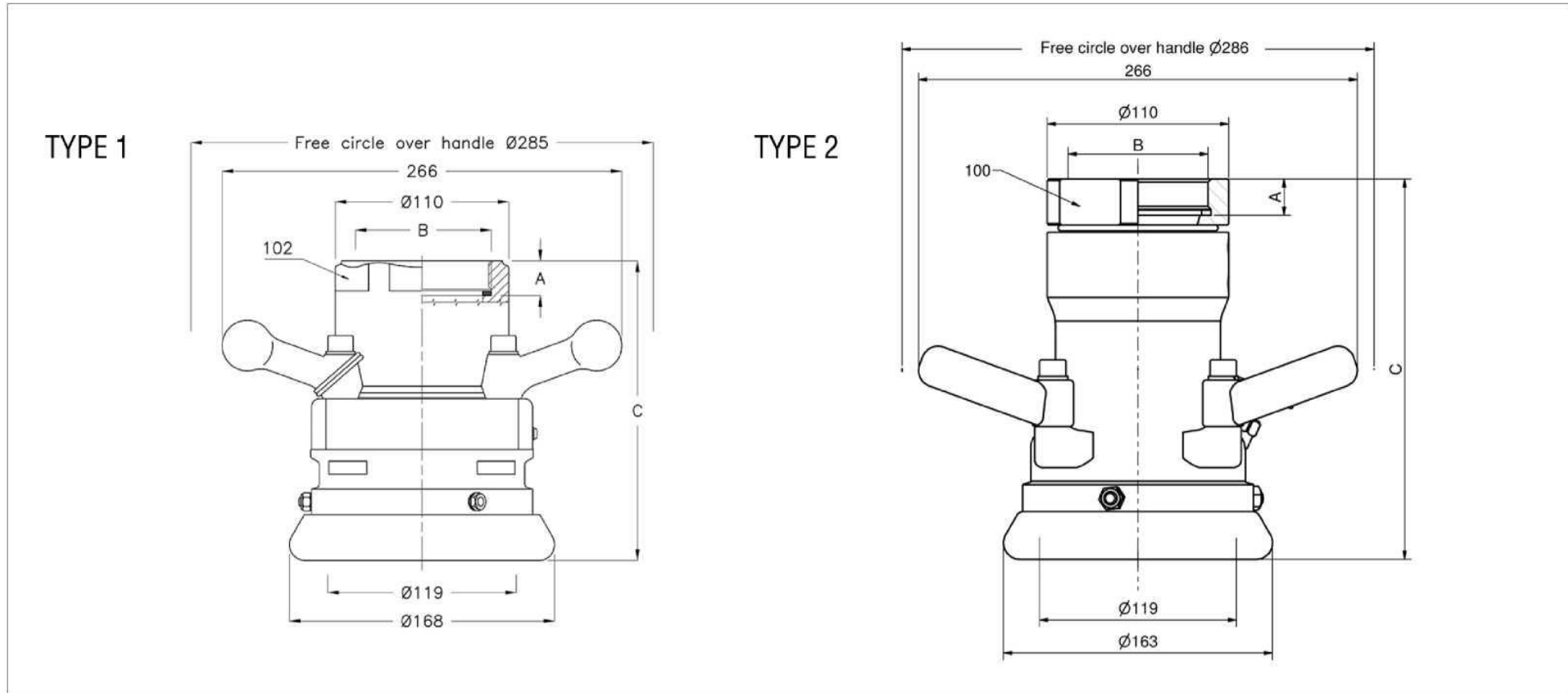
Max coupling pressure: 7 bar / 102 psi.

\* NPT thread is a tapered pipe thread, tightening on the tread. Therefore there is no flat seal.

\*\* Sealing material, see page 4

DN	NPS	D.Ø mm	B (connection)	Material	Code No.	Weight	WP Bar/Psi	TP Bar/Psi	Type	A	C	D	E	F	G	H
65	2½	105	BSP (ISO 228-G 2 1/2)	Aluminium	5332G-13**	4,3 kg / 9,5 lb	10 / 145	15 / 220	-	22	190					
65	2½	105	BSP (ISO 228-G 2 1/2)	Brass	5332G-24**	8,8 kg / 19,4 lb	10 / 145	15 / 220	-	22	190					
65	2½	105	BSP (ISO 228-G 2 1/2)	Stainless Steel	9250G-44**	7,4 kg / 16,3 lb	25 / 365	37,5 / 545	-	22	177					
65	2½	105	NPT (ANSI B2.1) *	Aluminium	7472G-13**	4,3 kg / 9,5 lb	10 / 145	15 / 220	-	30	216					
65	2½	105	NPT (ANSI B2.1) *	Brass	7472G-24**	8,8 kg / 19,4 lb	10 / 145	15 / 220	-	30	216					
65	2½	105	NPT (ANSI B2.1) *	Stainless Steel	9251G-44**	7,4 kg / 16,3 lb	25 / 365	37,5 / 545	-	30	208					
80	3	105	BSP (ISO 228-G 3)	Aluminium	5432G-13**	4,2 kg / 9,3 lb	10 / 145	15 / 220	-	22	190					
80	3	105	BSP (ISO 228-G 3)	Brass	5432G-24**	8,5 kg / 18,7 lb	10 / 145	15 / 220	-	22	190					
80	3	105	BSP (ISO 228-G 3)	Stainless Steel	9260G-44**	7,4 kg / 16,3 lb	25 / 365	37,5 / 545	-	22	180					
80	3	105	NPT (ANSI B2.1) *	Aluminium	7473G-13**	4,2 kg / 9,3 lb	10 / 145	15 / 220	-	32	200					
80	3	105	NPT (ANSI B2.1) *	Brass	7473G-24**	8,5 kg / 18,7 lb	10 / 145	15 / 220	-	32	200					
80	3	105	NPT (ANSI B2.1) *	Stainless Steel	9261G-44**	7,4 kg / 16,3 lb	25 / 365	37,5 / 545	-	32	187					

## TODO-MATIC Hose units - coupling Ø 119



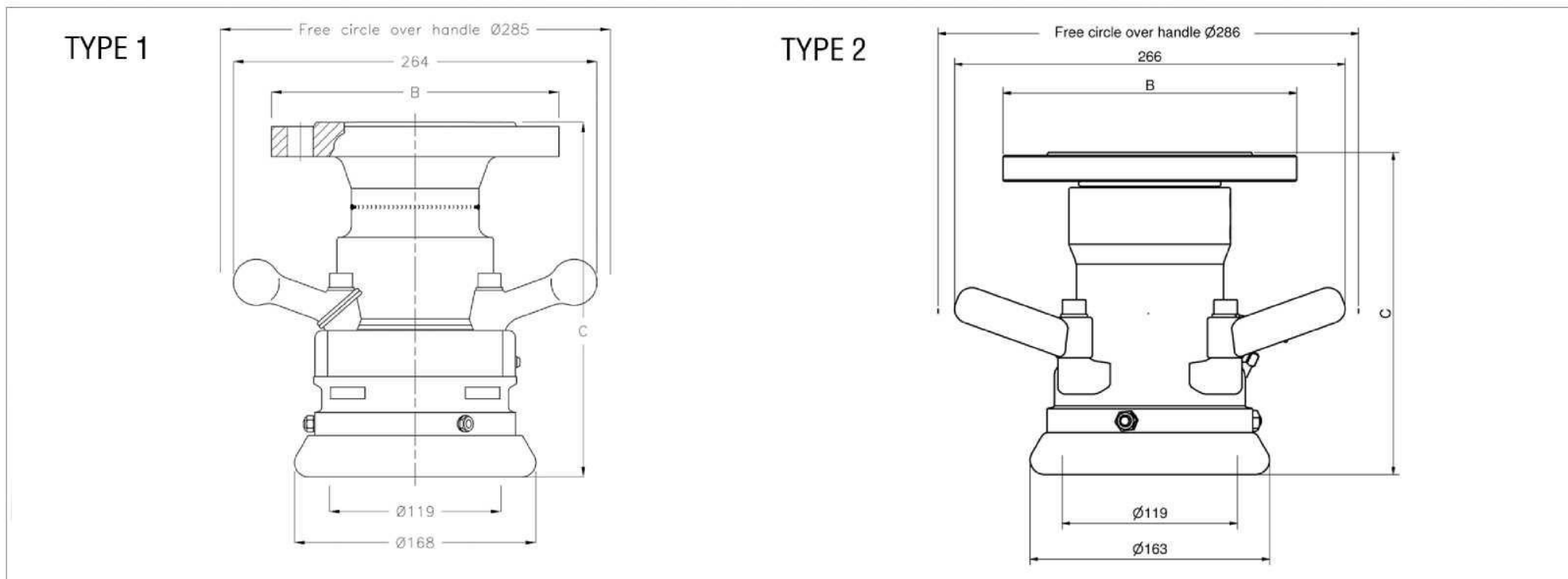
Max coupling pressure: 7 bar / 102 psi.

\* NPT thread is a tapered pipe thread, tightening on the tread. Therefore there is no flat seal.

\*\* Sealing material, see page 4.

DN	NPS	D.Ø mm	B (connection)	Material	Code No.	Weight	WP Bar/Psi	TP Bar/Psi	Type	A	C	D	E	F	G	H
80	3	119	BSP (ISO 228-G 3)	Aluminium	5532F-13**	4,9 kg / 10,8 lb	10 / 145	15 / 220	1	22	190					
80	3	119	BSP (ISO 228-G 3)	Brass	5532F-24**	10,2 kg / 22,5 lb	10 / 145	15 / 220	1	22	190					
80	3	119	BSP (ISO 228-G 3)	Stainless Steel	4300-44**	9,8 kg / 21,6 lb	25 / 363	37,5 / 544	2	22	230					
80	3	119	BSP (ISO 228-G 3)	Stainless Steel	9300F-44**	8,8 kg / 19,4 lb	25 / 365	37,5 / 544	1	22	190					
80	3	119	NPT (ANSI B2.1) *	Aluminium	7475F-13**	4,9 kg / 10,8 lb	10 / 145	15 / 220	1	32	199					
80	3	119	NPT (ANSI B2.1) *	Brass	7475F-24**	10,2 kg / 22,5 lb	10 / 145	15 / 220	1	32	199					
80	3	119	NPT (ANSI B2.1) *	Stainless Steel	4301-44**	9,8 kg / 21,6 lb	25 / 363	37,5 / 544	2	32	240					
80	3	119	NPT (ANSI B2.1) *	Stainless Steel	9301F-44**	8,8 kg / 19,4 lb	25 / 363	37,5 / 544	1	32	199					

## TODO-MATIC Hose units - coupling Ø 119

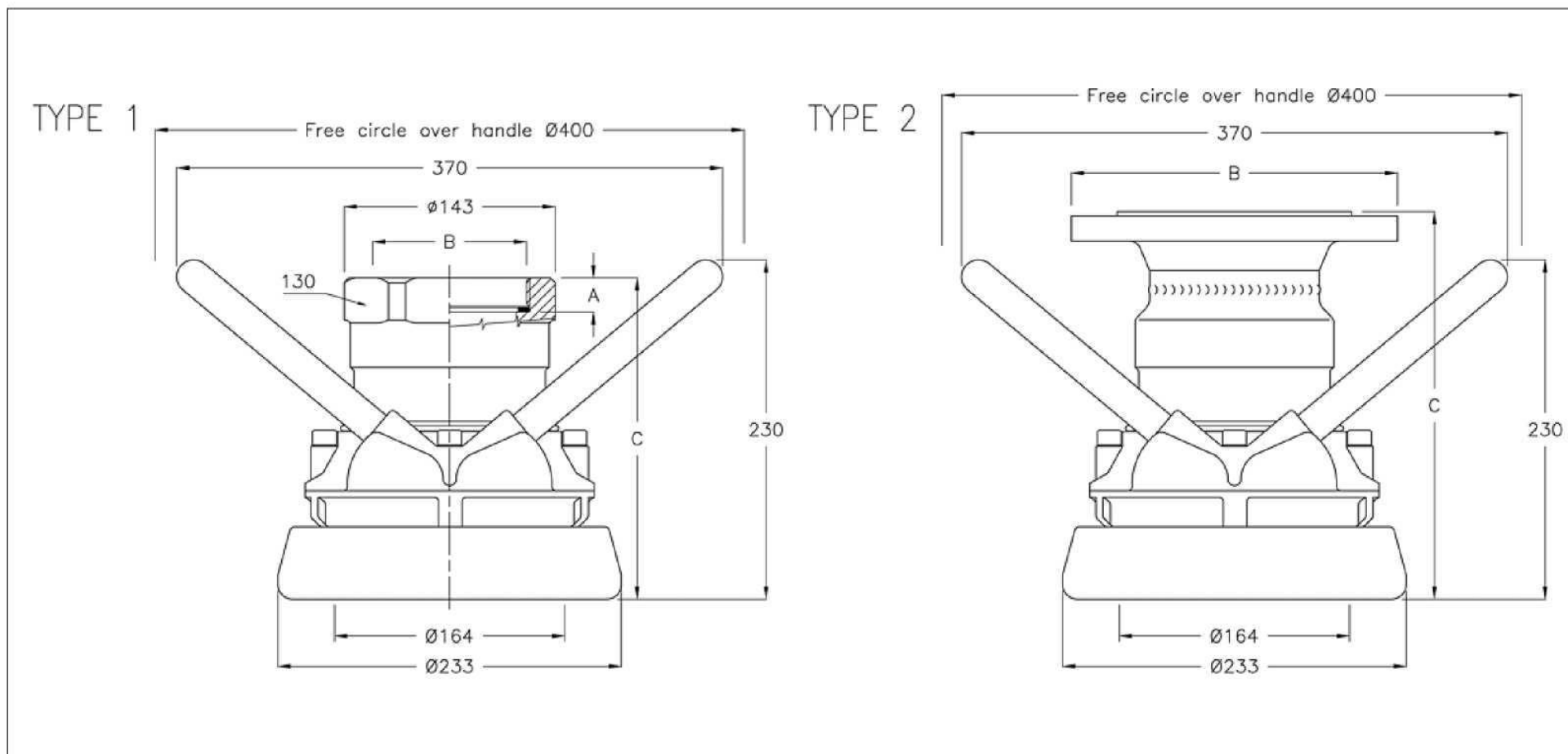


Max coupling pressure: 7 bar / 102 psi.

\*\* Sealing material, see page 4.

DN	NPS	D.Ø mm	B (connection)	Material	Code No.	Weight	WP Bar/Psi	TP Bar/Psi	Type	A	C	D	E	F	G	H
80	3	119	EN 1092-1 PN 10/16 Type B	Stainless Steel	4302-44**	13,0 kg / 28,7 lb	16 / 232	37,5 / 544	2		222					
80	3	119	EN 1092-1 PN 10/16 Type B	Stainless Steel	9316F-44**	13,5 kg / 29,8 lb	16 / 232	37,5 / 545	1		239					
80	3	119	EN 1092-1 PN 10/16 Type C	Stainless Steel	9088F-44**	13,5 kg / 29,8 lb	16 / 232	37,5 / 545	1		260					
80	3	119	EN 1092-1 PN 25/40 Type B	Stainless Steel	4303-44**	13,0 kg / 28,7 lb	25 / 363	37,5 / 544	2		226					
80	3	119	EN 1092-1 PN 25/40 Type B	Stainless Steel	9317F-44**	13,5 kg / 29,8 lb	25 / 365	37,5 / 545	1		247					
80	3	119	EN 1092-1 PN 25/24 Type C	Stainless Steel	9090F-44**	13,5 kg / 29,8 lb	25 / 365	37,5 / 545	1		247					
80	3	119	EN 1092-1 PN 25/40 Type F	Stainless Steel	4308-44**	13,1 kg / 28,9 lb	25 / 363	37,5 / 544	2		226					
80	3	119	EN 1092-1 PN 25/40 Type F	Stainless Steel	9367F-44**	13,6 kg / 30,0 lb	25 / 365	37,5 / 545	1		247					
80	3	119	ANSI B16.5 3" Class 150	Stainless Steel	4304-44**	13,7 kg / 30,2 lb	16 / 232	37,5 / 544	2		223					
80	3	119	ANSI B16.5 3" Class 150	Stainless Steel	9360F-44**	14,2 kg / 31,3 lb	16 / 232	37,5 / 545	1		259					
80	3	119	ANSI B16.5 3" Class 300	Stainless Steel	4305-44**	13,7 kg / 30,2 lb	25 / 363	37,5 / 544	2		231					
80	3	119	ANSI B16.5 3" Class 300	Stainless Steel	9361F-44**	14,2 kg / 31,3 lb	25 / 365	37,5 / 545	1		259					

## TODO-MATIC Hose units - coupling Ø 164



Max coupling pressure: 6 bar / 102 psi.

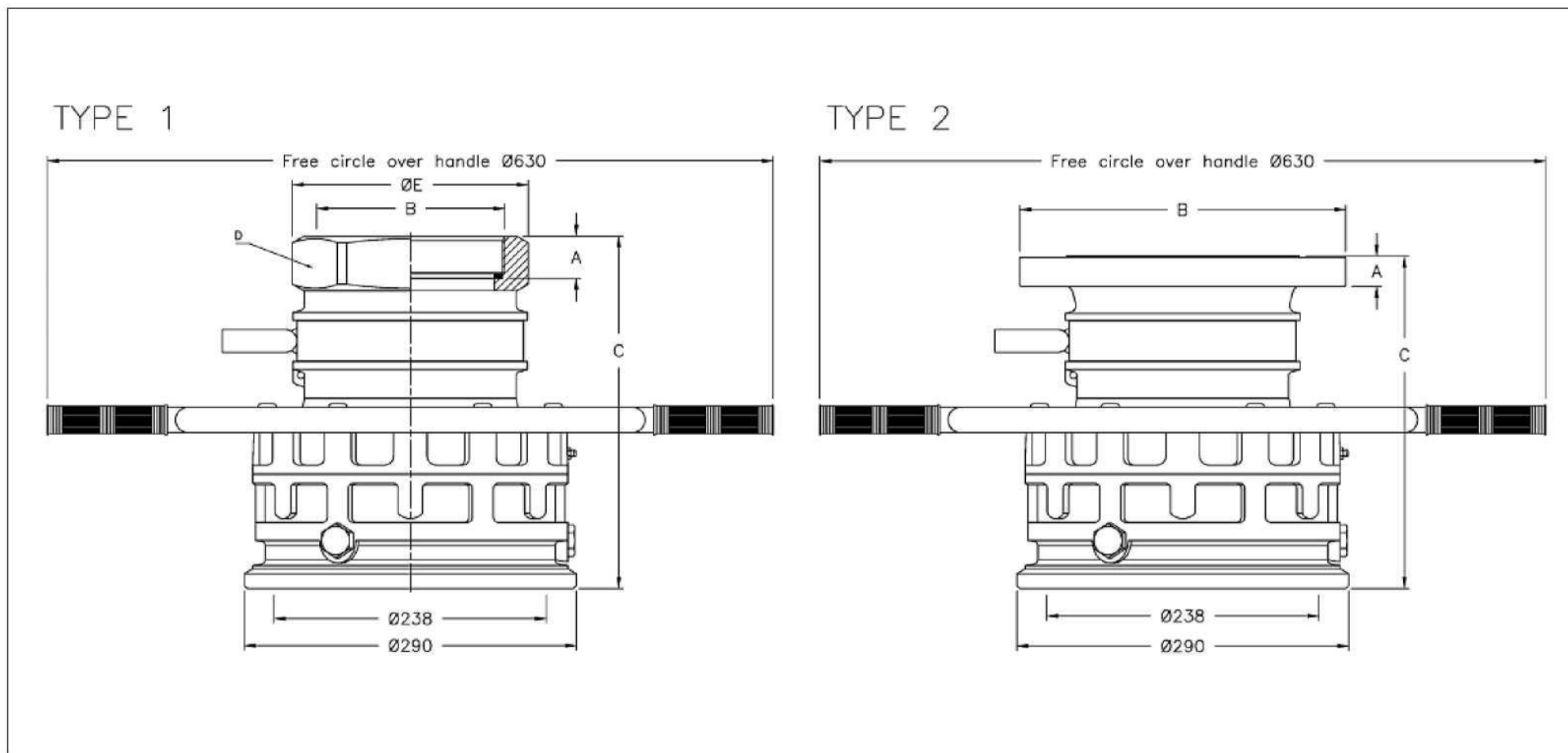
\* NPT thread is a tapered pipe thread, tightening on the tread. Therefore there is no flat seal.

\*\* Sealing material, see page 4

DN	NPS	D.Ø mm	B (connection)	Material	Code No.	Weight	WP Bar/Psi	TP Bar/Psi	Type	A	C	D	E	F	G	H
100	4	164	BSP (ISO 228-G 4)	Aluminium	5632H-13**	9,3 kg / 20,5 lb	10 / 145	15 / 220	1	24	220	-	-	-	-	-
100	4	164	BSP (ISO 228-G 4)	Brass	5632H-24**	20,5 kg / 45,2 lb	10 / 145	15 / 220	1	24	220	-	-	-	-	-
100	4	164	BSP (ISO 228-G 4)	Stainless Steel	9400-44**	19,4 kg / 42,8 lb	25 / 365	37,5 / 545	1	24	220	-	-	-	-	-
100	4	164	NPT (ANSI B2.1) *	Aluminium	7477H-13**	9,5 kg / 20,9 lb	10 / 145	15 / 220	1	34	230	-	-	-	-	-
100	4	164	NPT (ANSI B2.1) *	Brass	7477H-24**	20,7 kg / 45,6 lb	10 / 145	15 / 220	1	34	230	-	-	-	-	-
100	4	164	NPT (ANSI B2.1) *	Stainless Steel	9401-44**	19,9 kg / 42,8 lb	25 / 365	37,5 / 545	1	34	230	-	-	-	-	-
100	4	164	EN 1092-1 PN 10/16 Type B	Stainless Steel	9416-44**	20,0 kg / 44,1 lb	16 / 232	37,5 / 545	2	-	261	-	-	-	-	-



## TODO-MATIC Hose units - coupling Ø 238



Max coupling pressure: 7 bar / 102 psi.

\* NPT thread is a tapered pipe thread, tightening on the tread. Therefore there is no flat seal.

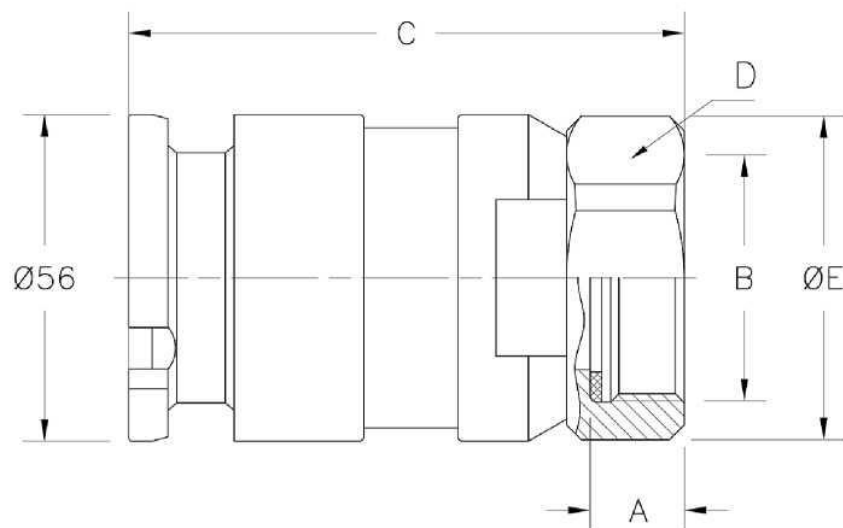
\*\*\*Drilled according to Standard only

\*\* Sealing material, see page 4

DN	NPS	D.Ø mm	B (connection)	Material	Code No.	Weight	WP Bar/Psi	TP Bar/Psi	Type	A	C	D	E	F	G	H
150	6	238	BSP (ISO 228-G 6)	Aluminium	7200-14**	24,6 kg / 54,2 lb	10 / 145	15 / 220	1	35	308	190	205	-	-	-
150	6	238	BSP (ISO 228-G 6)	Brass	7200-24**	52,0 kg / 114,6 lb	10 / 145	15 / 220	1	35	308	190	205	-	-	-
150	6	238	BSP (ISO 228-G 6)	Stainless Steel	7200E-44**	48,2 kg / 106,3 lb	10 / 145	15 / 220	1	35	308	190	205	-	-	-
150	6	238	NPT (ANSI B2.1)	Aluminium	7201-14**	25,0 kg / 55,1 lb	10 / 145	15 / 220	1	37	308	190	205	-	-	-
150	6	238	NPT (ANSI B2.1) *	Brass	7201-24**	52,0 kg / 114,6 lb	10 / 145	15 / 220	1	37	308	190	205	-	-	-
150	6	238	NPT (ANSI B2.1) *	Stainless Steel	7201E-44**	48,2 kg / 106,3 lb	10 / 145	15 / 220	1	37	308	190	205	-	-	-
150	6	238	EN 1092-4*** PN 10/16 Type B	Aluminium	7202-14**	25,0 kg / 55,1 lb	10 / 145	15 / 220	2	24	280	-	-	-	-	-



## TODO-MATIC Tank units - coupling Ø 56



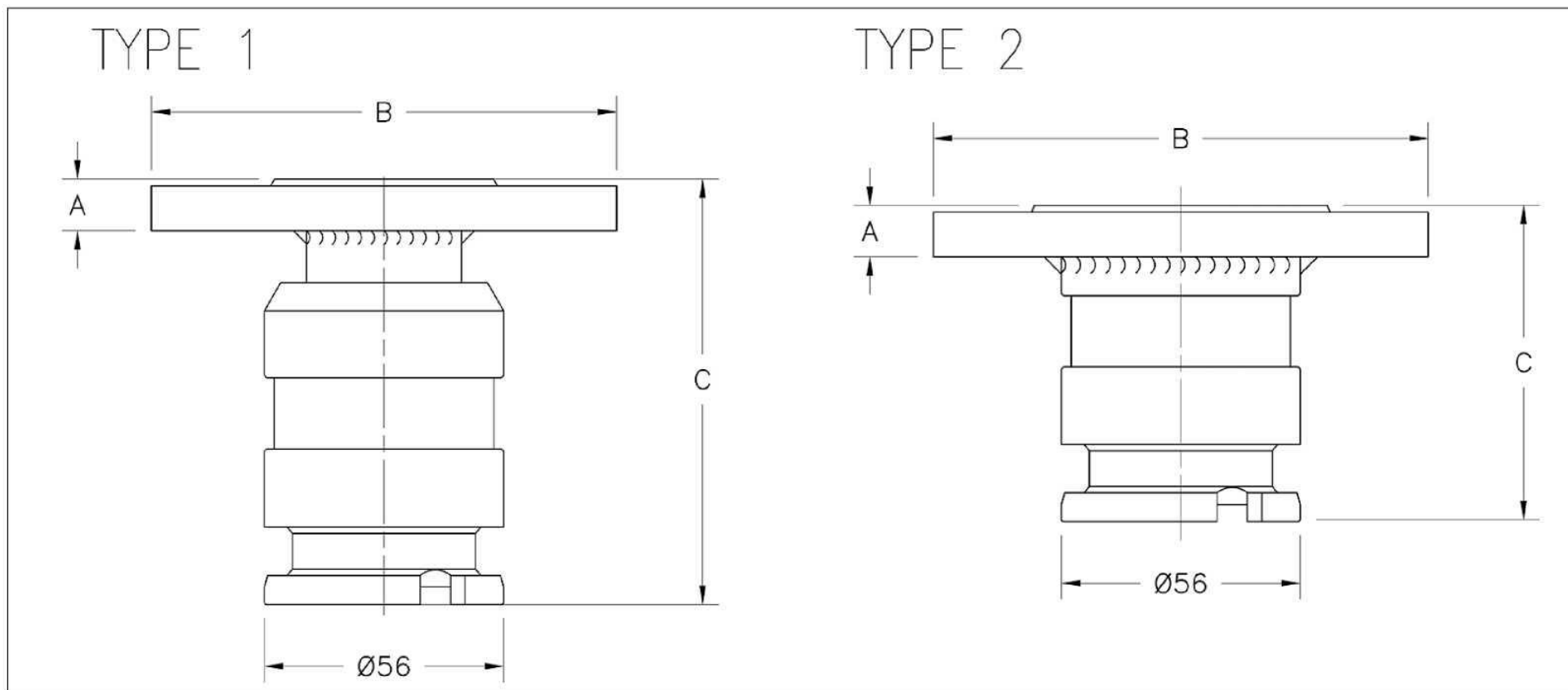
Max coupling pressure: 7 bar / 102 psi.

\* NPT thread is a tapered pipe thread, tightening on the tread. Therefore there is no flat seal.

\*\*Sealing material, see page 4

DN	NPS	D.Ø mm	B (connection)	Material	Code No.	Weight	WP Bar/Psi	TP Bar/Psi	Type	A	C	D	E	F	G	H
19	¾	56	BSP (ISO 228-G 3/4)	Aluminium	5823A-11**	0,3 kg / 0,7 lb	10 / 145	15 / 220	-	12	86,5	42	47			
19	¾	56	BSP (ISO 228-G 3/4)	Brass	5823A-22**	0,8 kg / 1,8 lb	10 / 145	15 / 220	-	12	86,5	42	47			
19	¾	56	BSP (ISO 228-G 3/4)	Stainless Steel	5823A-44**	0,7 kg / 1,5 lb	25 / 365	37,5 / 545	-	12	86,5	42	47			
19	¾	56	NPT (ANSI B2.1) *	Aluminium	7450A-11**	0,3 kg / 0,7 lb	10 / 145	15 / 220	-	18	92	42	47			
19	¾	56	NPT (ANSI B2.1) *	Brass	7450A-22**	0,8 kg / 1,8 lb	10 / 145	15 / 220	-	18	92	42	47			
19	¾	56	NPT (ANSI B2.1) *	Stainless Steel	7450A-44**	0,8 kg / 1,8 lb	25 / 365	37,5 / 545	-	18	92	42	47			
25	1	56	BSP (ISO 228-G 1)	Aluminium	4942A-11**	0,3 kg / 0,7 lb	10 / 145	15 / 220	-	12	82,5	42	45			
25	1	56	BSP (ISO 228-G 1)	Brass	4942A-22**	0,8 kg / 1,8 lb	10 / 145	15 / 220	-	12	82,5	42	45			
25	1	56	BSP (ISO 228-G 1)	Stainless Steel	4942A-44**	0,8 kg / 1,8 lb	25 / 365	37,5 / 545	-	12	82,5	42	45			
25	1	56	NPT (ANSI B2.1) *	Aluminium	7451A-11**	0,3 kg / 0,7 lb	10 / 145	15 / 220	-	21	91	42	45			
25	1	56	NPT (ANSI B2.1) *	Brass	7451A-22**	0,8 kg / 1,8 lb	10 / 145	15 / 220	-	21	91	42	45			
25	1	56	NPT (ANSI B2.1) *	Stainless Steel	7451A-44**	0,7 kg / 1,5 lb	25 / 365	37,5 / 545	-	21	91	42	45			
32	1¼	56	BSP (ISO 228-G 1 1/4)	Aluminium	4992A-11**	0,3 kg / 0,7 lb	10 / 145	15 / 220	-	16	94,5	50	55			
32	1¼	56	BSP (ISO 228-G 1 1/4)	Brass	4992A-22**	0,9 kg / 2,0 lb	10 / 145	15 / 220	-	16	94,5	50	55			
32	1¼	56	BSP (ISO 228-G 1 1/4)	Stainless Steel	4992A-44**	0,7 kg / 1,5 lb	25 / 365	37,5 / 545	-	16	94,5	50	55			
32	1¼	56	NPT (ANSI B2.1)*	Aluminium	7452A-11**	0,3 kg / 0,7 lb	10 / 145	15 / 220	-	21	99,5	50	55			
32	1¼	56	NPT (ANSI B2.1)*	Brass	7452A-22**	0,8 kg / 1,8 lb	10 / 145	15 / 220	-	21	99,5	50	55			
32	1¼	56	NPT (ANSI B2.1)*	Stainless Steel	7452A-44**	0,7 kg / 1,5 lb	25 / 365	37,5 / 545	-	21	99,5	50	55			

## TODO-MATIC Tank units - coupling Ø 56

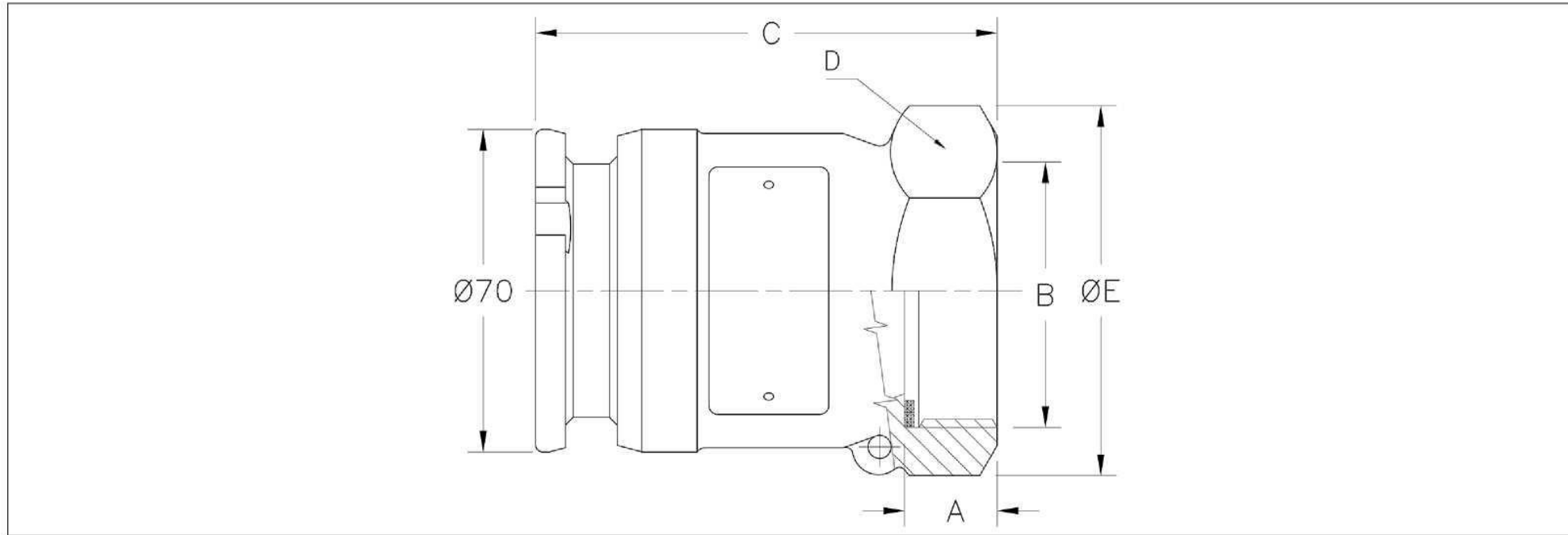


Max coupling pressure: 7 bar / 102 psi.

\*\*Sealing material, see page 4

DN	NPS	D.Ø mm	B (connection)	Material	Code No.	Weight	WP Bar/Psi	TP Bar/Psi	Type	A	C	D	E	F	G	H
20	¾	56	EN 1092-1 PN 10/16 - 25/40 Type B	Stainless Steel	4867A-44**	1,4 kg / 3,1 lb	25 / 365	37,5 / 545	1	16	103	-	-	-	-	-
25	1	56	EN 1092-1 PN 10/16 - 25/40 Type B	Stainless Steel	4868A-44**	1,4 kg / 3,1 lb	25 / 365	37,5 / 545	2	12	73,5	-	-	-	-	-
40	1½	56	EN 1092-1 PN 10/16 - 25/40 Type B	Stainless Steel	4870A-44**	2,0 kg / 4,4 lb	25 / 365	37,5 / 545	2	12	73,5	-	-	-	-	-
50	2	56	EN 1092-1 PN 10/16 Type B	Stainless Steel	4879A-44**	2,9 kg / 6,4 lb	16 / 232	37,5 / 545	2	12	73,5	-	-	-	-	-
25	1	56	EN 1092-1 PN 10/16 - 25/40 Type C	Stainless Steel	4897A-44**	1,4 kg / 3,1 lb	25 / 365	37,5 / 545	2	18	79,5	-	-	-	-	-
50	2	56	EN 1092-1 PN 25/40 Type E	Stainless Steel	7601A-44**	2,6 kg / 5,7 lb	25 / 365	37,5 / 545	2	20	81,5	-	-	-	-	-
20	¾	56	ANSI B16.5 ¾" Class 150	Stainless Steel	4863A-44**	1,2 kg / 2,6 lb	16 / 232	37,5 / 545	1	12	98,5	-	-	-	-	-
25	1	56	ANSI B16.5 1" Class 150	Stainless Steel	4864A-44**	1,4 kg / 3,1 lb	16 / 232	37,5 / 545	1	12	98,5	-	-	-	-	-
40	1½	56	ANSI B16.5 1½" Class 150	Stainless Steel	4866A-44**	1,6 kg / 3,5 lb	16 / 232	37,5 / 545	2	12	73,5	-	-	-	-	-
25	1	56	ANSI B16.5 1" Class 300	Stainless Steel	4859A-44**	1,5 kg / 3,3 lb	25 / 365	37,5 / 545	2	17,5	79	-	-	-	-	-

## TODO-MATIC Tank units - coupling Ø 70



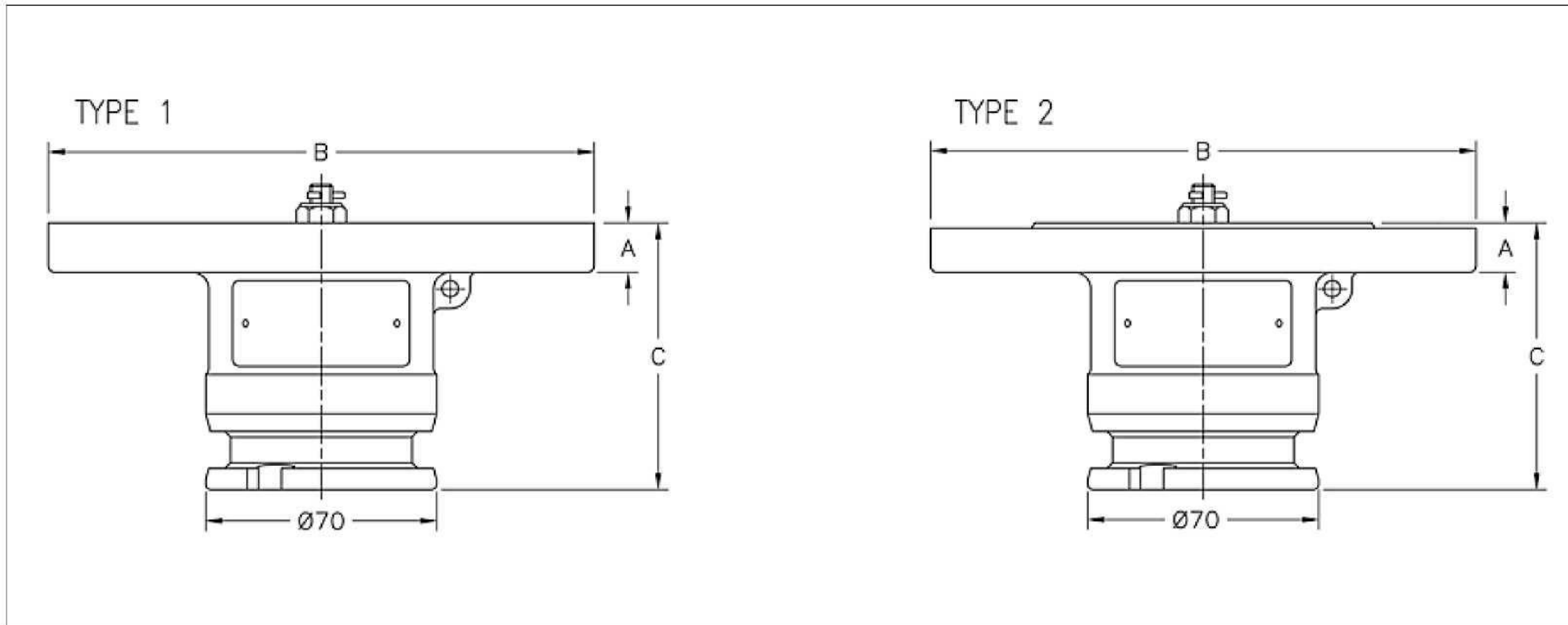
Max coupling pressure: 7 bar / 102 psi.

\* NPT thread is a tapered pipe thread, tightening on the tread. Therefore there is no flat seal.

\*\*Sealing material, see page 4

DN	NPS	D.Ø mm	B (connection)	Material	Code No.	Weight	WP Bar/Psi	TP Bar/Psi	Type	A	C	D	E	F	G	H
40	1½	70	BSP (ISO 228-G 1 1/2")	Aluminium	5001-11**	0,5 kg / 1,1 lb	10 / 145	15 / 220	-	18	105	57	65			
40	1½	70	BSP (ISO 228-G 1 1/2")	Brass	5001-22**	1,3 kg / 2,9 lb	10 / 145	15 / 220	-	18	105	57	65			
40	1½	70	BSP (ISO 228-G 1 1/2")	Stainless Steel	5001A-44**	1,8 kg / 4,0 lb	25 / 365	37,5 / 545	-	18	108	69	79			
40	1½	70	NPT (ANSI B2.1) *	Aluminium	7466-11**	0,4 kg / 0,9 lb	10 / 145	15 / 220	-	21	107	57	65			
40	1½	70	NPT (ANSI B2.1) *	Brass	7466-22**	1,2 kg / 2,6 lb	10 / 145	15 / 220	-	21	107	57	65			
40	1½	70	NPT (ANSI B2.1) *	Stainless Steel	7466A-44**	1,8 kg / 4,0 lb	25 / 365	37,5 / 545	-	21	110	69	79			
50	2	70	(ISO 228-G 2)	Aluminium	5002-11**	0,4 kg / 0,9 lb	10 / 145	15 / 220	-	19	100	69	79			
50	2	70	(ISO 228-G 2)	Brass	5002-22**	1,4 kg / 3,1 lb	10 / 145	15 / 220	-	19	100	69	79			
50	2	70	(ISO 228-G 2)	Stainless Steel	5002E-44**	1,8 kg / 4,0 lb	25 / 365	37,5 / 545	-	19	100	69	79			
50	2	70	(ANSI B2.1) *	Aluminium	7467-11**	0,5 kg / 1,1 lb	10 / 145	15 / 220	-	21,5	102	69	79			
50	2	70	(ANSI B2.1) *	Brass	7467-22**	1,3 kg / 2,9 lb	10 / 145	15 / 220	-	21,5	102	69	79			
50	2	70	(ANSI B2.1) *	Stainless Steel	7467E-44**	1,8 kg / 4,0 lb	25 / 365	37,5 / 545	-	21,5	103	69	79			
50	2	70	S60 x 6	Aluminium	7095-11**	1,7 kg / 3,7 lb	10 / 145	15 / 220	-	19	103	70	75			
50	2	70	S60 x 6	Brass	7095-44**	3,7 kg / 8,2 lb	25 / 365	37,5 / 545	-	19	103	70	75			
50	2	70	W2" - 7 Female Threads	Aluminium	8298-11**	0,5 kg / 1,1 lb	10 / 145	15 / 220	-	19	100	68	80			
50	2	70	W2" - 7 Female Threads	Brass	8298-22**	1,4 kg / 3,1 lb	10 / 145	15 / 220	-	19	100	68	80			

## TODO-MATIC Tank units - coupling Ø 70



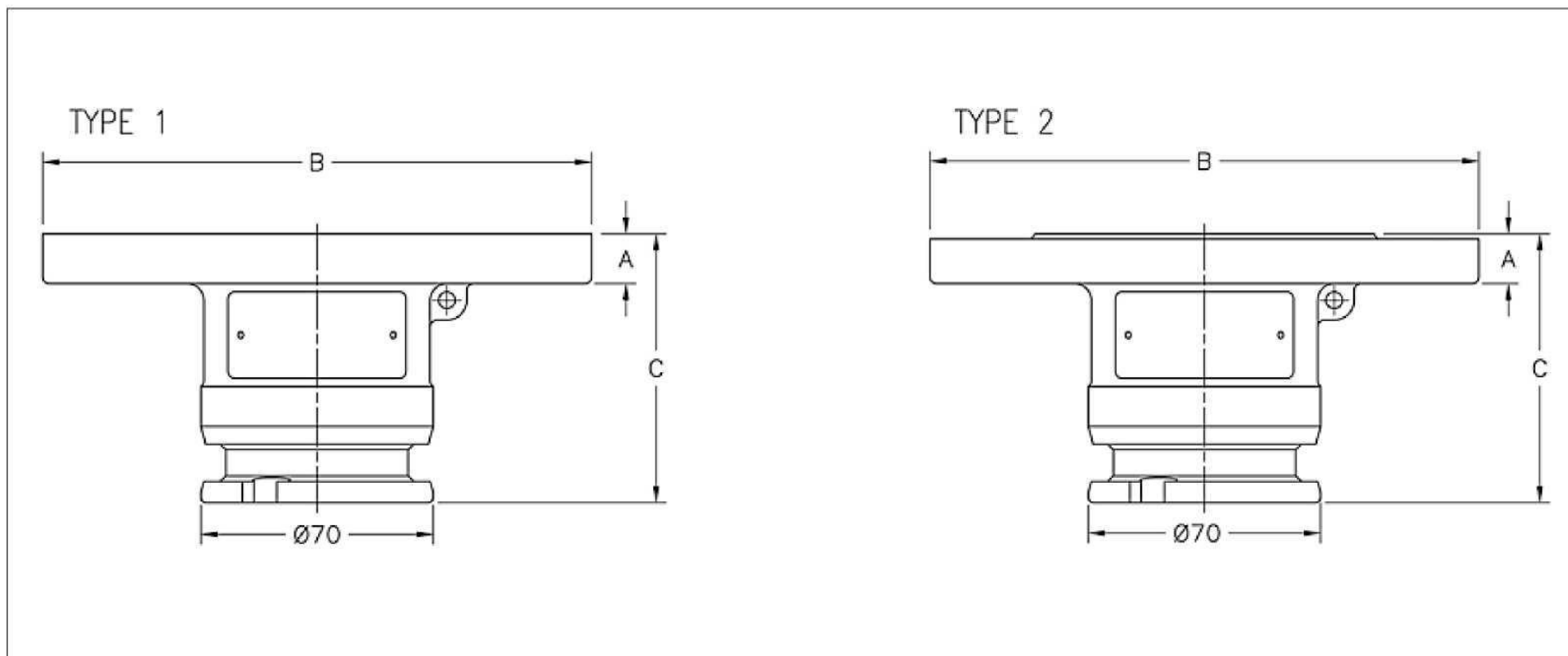
Max coupling pressure: 7 bar / 102 psi. \*Drilled according to Standard only

\*\*Sealing material, see page 4

DN	NPS	D.Ø mm	B (connection)	Material	Code No.	Weight	WP Bar/Psi	TP Bar/Psi	Type	A	C	D	E	F	G	H
50	2	70	Undrilled Ø165	Aluminium	5000-11**	1,1 kg / 2,4 lb	10 / 145	15 / 220	1	15	81					
50	2	70	Undrilled Ø165	Brass	5000-22**	2,0 kg / 4,4 lb	10 / 145	15 / 220	1	15	81					
40	1½	70	ANSI B16.5 1½" Class 150	Aluminium	5025-11**	0,7 kg / 1,5 lb	10 / 145	15 / 220	2	15	81					
40	1½	70	ANSI B16.5 1½" Class 150	Brass	5025-22**	2,0 kg / 4,4 lb	10 / 145	15 / 220	2	15	81					
80	3	70	TW1 (DIN 28459)	Aluminium	5108-11**	0,8 kg / 1,8 lb	10 / 145	15 / 220	1	15	81					
80	3	70	TW1 (DIN 28459)	Brass	5108-22**	2,2 kg / 4,9 lb	10 / 145	15 / 220	1	15	81					
50	2	70	ANSI B16.5 2" Class 150	Aluminium	5109-11**	0,9 kg / 2,0 lb	10 / 145	15 / 220	2	15	81					
50	2	70	ANSI B16.5 2" Class 150	Brass	5109-22**	2,8 kg / 6,2 lb	10 / 145	15 / 220	2	15	81					
40	1½	70	EN 1092-4* PN 10/16 Type B	Aluminium	5113-11**	0,9 kg / 2,0 lb	10 / 145	15 / 220	2	15	81					
40	1½	70	EN 1092-3* PN 10/16 Type B	Brass	5113-22**	3,1 kg / 6,8 lb	10 / 145	15 / 220	2	15	81					
50	2	70	EN 1092-4* PN 10/16 Type B	Aluminium	5114-11**	1,0 kg / 2,2 lb	10 / 145	15 / 220	2	15	81					
50	2	70	EN 1092-3* PN 10/16 Type B	Brass	5114-22***	3,1 kg / 6,8 lb	10 / 145	15 / 220	2	15	81					



## TODO-MATIC Tank units - coupling Ø 70

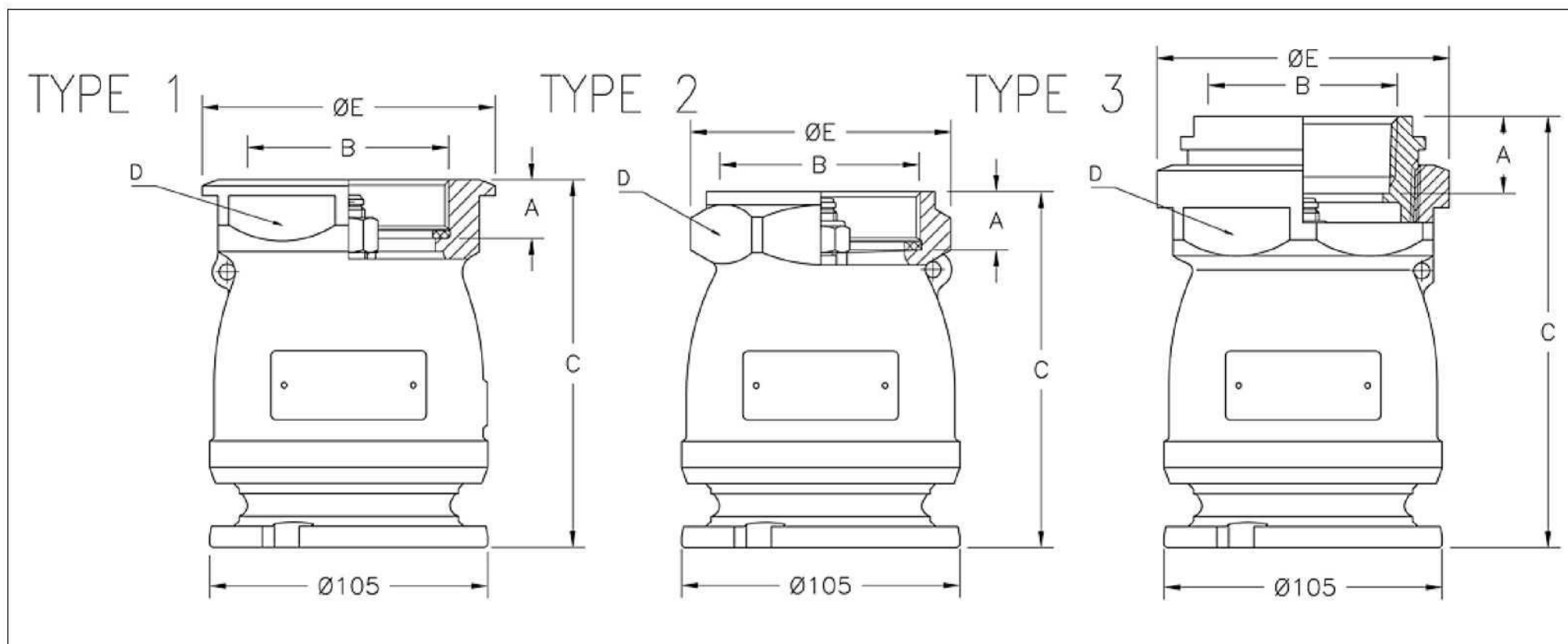


Max coupling pressure: 7 bar / 102 psi.

\*\*Sealing material, see page 4

DN	NPS	D.Ø mm	B (connection)	Material	Code No.	Weight	WP Bar/Psi	TP Bar/Psi	Type	A	C	D	E	F	G	H
50	2	70	Undrilled Ø165	Stainless Steel	5000E-44**	4,1 kg / 9,0 lb	25 / 365	37,5 / 545	1	20	86	-	-	-	-	-
40	1½	70	ANSI B16.5 1½" Class 150	Stainless Steel	5025E-44**	2,1 kg / 4,6 lb	16 / 232	37,5 / 545	2	20	86	-	-	-	-	-
80	3	70	TW1 (DIN 28459)	Stainless Steel	5108E-44**	3,5 kg / 7,7 lb	10 / 145	37,5 / 545	1	20	86	-	-	-	-	-
50	2	70	ANSI B16.5 2" Class 150	Stainless Steel	5109E-44**	2,9 kg / 6,4 lb	16 / 232	37,5 / 545	2	20	86	-	-	-	-	-
40	1½	70	EN 1092-1 PN 10/16 - 25/40 Type B	Stainless Steel	5113E-44**	2,9 kg / 6,4 lb	25 / 365	37,5 / 545	2	20	86	-	-	-	-	-
50	2	70	EN 1092-1 PN 10/16 Type B	Stainless Steel	5114E-44**	2,9 kg / 6,4 lb	16 / 232	37,5 / 545	2	20	86	-	-	-	-	-
50	2	70	ANSI B16.5 2" Class 300	Stainless Steel	7109E-44**	2,9 kg / 6,4 lb	25 / 365	37,5 / 545	2	20	86	-	-	-	-	-
40	1½	70	ANSI B16.5 1½" Class 300	Stainless Steel	5300E-44**	3,5 kg / 7,7 lb	25 / 365	37,5 / 545	2	20	86	-	-	-	-	-
50	2	70	EN 1092-1 PN 25/40 Type F	Stainless Steel	7500E-44**	3,5 kg / 7,7 lb	25 / 365	37,5 / 545	2	20	86	-	-	-	-	-
50	2	70	EN 1092-1 PN 25/40 Type E	Stainless Steel	7501E-44**	3,5 kg / 7,7 lb	25 / 365	37,5 / 545	2	20	86	-	-	-	-	-
50	2	70	EN 1092-1 PN 25/40 Type B	Stainless Steel	7502E-44**	3,3 kg / 7,3 lb	25 / 365	37,5 / 545	2	20	86	-	-	-	-	-

## TODO-MATIC Tank units - coupling Ø 105



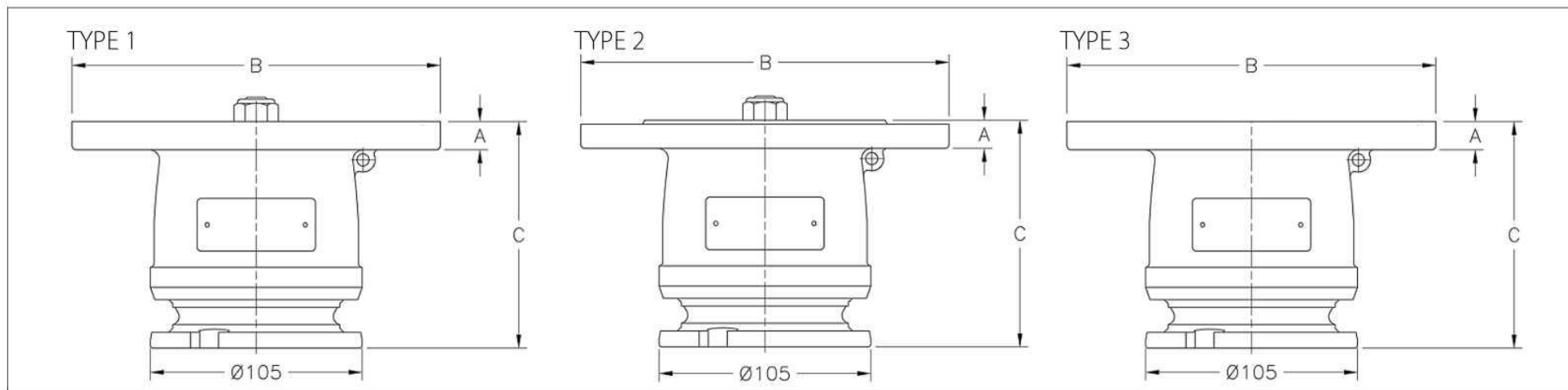
Max coupling pressure: 7 bar / 102 psi.

\* NPT thread is a tapered pipe thread, tightening on the tread. Therefore there is no flat seal.

\*\*Sealing material, see page 4

DN	NPS	D.Ø mm	B (connection)	Material	Code No.	Weight	WP Bar/Psi	TP Bar/Psi	Type	A	C	D	E	F	G	H
65	2 ½	105	BSP (ISO 228-G 2½)	Aluminium	5331C-11**	1,0 kg / 2,2 lb	10 / 145	15 / 220	2	22	134	86	98	-	-	-
65	2 ½	105	BSP (ISO 228-G 2½)	Brass	5331C-22**	3,0 kg / 6,6 lb	10 / 145	15 / 220	2	22	134	86	98	-	-	-
65	2 ½	105	BSP (ISO 228-G 2½)	Stainless Steel	5331X-44**	2,9 kg / 6,4 lb	25 / 365	37,5 / 545	1	22,5	138	98	110	-	-	-
65	2 ½	105	NPT (ANSI B2.1) *	Aluminium	7470C-11**	1,6 kg / 3,5 lb	10 / 145	15 / 220	3	29	162	98	110	-	-	-
65	2 ½	105	NPT (ANSI B2.1) *	Brass	7470C-22**	3,4 kg / 7,5 lb	10 / 145	15 / 220	3	29	162	98	110	-	-	-
65	2 ½	105	NPT (ANSI B2.1) *	Stainless Steel	7470X-44*	3,0 kg / 6,6 lb	25 / 365	37,5 / 545	3	29	162	98	110	-	-	-
80	3	105	BSP (ISO 228-G3)	Aluminium	5431C-11**	0,9 kg / 2,0 lb	10 / 145	15 / 220	1	22	134	98	110	-	-	-
80	3	105	BSP (ISO 228-G3)	Brass	5431C-22**	2,9 kg / 6,4 lb	10 / 145	15 / 220	1	22	134	98	110	-	-	-
80	3	105	BSP (ISO 228-G3)	Stainless Steel	5431X-44**	2,7 kg / 6,0 lb	25 / 365	37,5 / 545	1	22	134	98	110	-	-	-
80	3	105	NPT (ANSI B2.1) *	Aluminium	7471C-11**	0,9 kg / 2,0 lb	10 / 145	15 / 220	1	32	144	98	110	-	-	-
80	3	105	NPT (ANSI B2.1) *	Brass	7471C-22**	2,8 kg / 6,2 lb	10 / 145	15 / 220	1	32	144	98	110	-	-	-
80	3	105	NPT (ANSI B2.1) *	Stainless Steel	7471X-44**	2,5 kg / 5,5 lb	25 / 365	37,5 / 545	1	32	144	98	110	-	-	-

## TODO-MATIC Tank units - coupling Ø 105

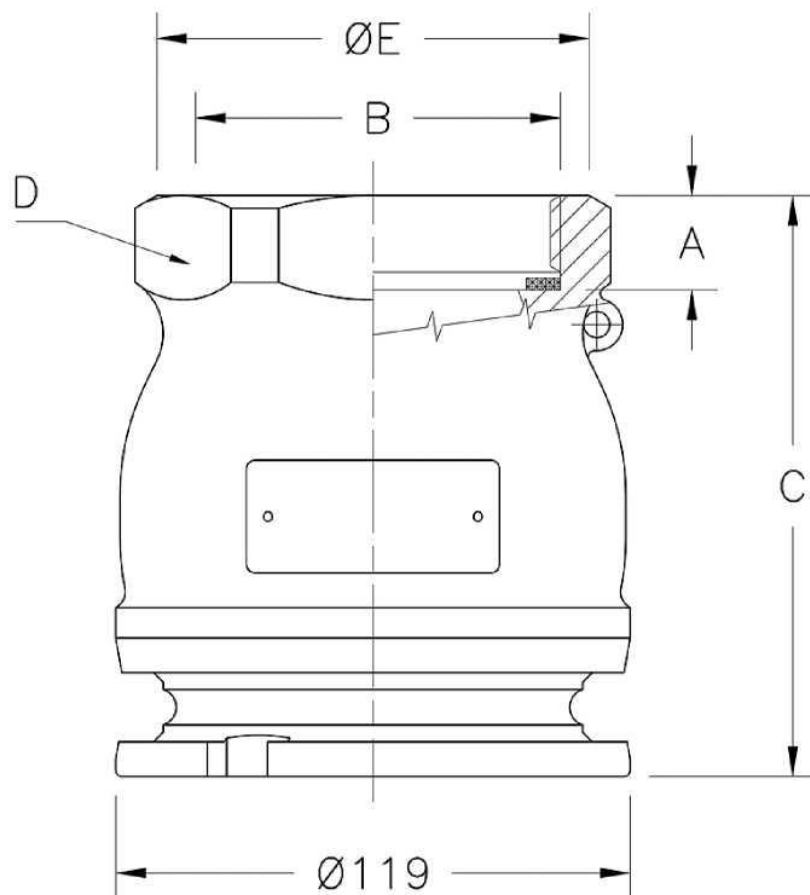


Max coupling pressure: 7 bar / 102 psi. \*Drilled according to Standard only

\*\*Sealing material, see page 4

DN	NPS	D.Ø mm	B (connection)	Material	Code No.	Weight	WP Bar/Psi	TP Bar/Psi	Type	A	C	D	E	F	G	H
65	2½	105	Undrilled Ø182	Aluminium	5400C-11**	1,5 kg / 3,3 lb	10 / 145	15 / 220	1	14	112	-	-	-	-	-
65	2½	105	Undrilled Ø182	Brass	5400C-22**	4,8 kg / 10,6 lb	10 / 145	15 / 220	1	14	112	-	-	-	-	-
65	2½	105	Undrilled Ø182	Stainless Steel	5400D-44**	4,0 kg / 8,8 lb	25 / 365	37,5 / 545	1	14	112	-	-	-	-	-
65	2½	105	EN 1092-4* PN 10/16 Type B	Aluminium	5329C-11**	1,4 kg / 3,1 lb	10 / 145	15 / 220	2	14	112	-	-	-	-	-
65	2½	105	EN 1092-3* PN 10/16 Type B	Brass	5329C-22**	4,6 kg / 10,1 lb	10 / 145	15 / 220	2	14	112	-	-	-	-	-
65	2½	105	EN 1092-1 PN 10/16 Type B	Stainless Steel	5329D-44**	3,9 kg / 8,6 lb	16 / 232	37,5 / 545	2	18	112	-	-	-	-	-
65	2½	105	ANSI B16.5 2½" Class 150	Aluminium	5306C-11**	1,5 kg / 3,3 lb	10 / 145	15 / 220	2	14	112	-	-	-	-	-
65	2½	105	ANSI B16.5 2½" Class 150	Brass	5306C-22**	4,6 kg / 10,1 lb	10 / 145	15 / 220	2	14	112	-	-	-	-	-
65	2½	105	ANSI B16.5 2½" Class 150	Stainless Steel	5306D-44**	4,0 kg / 8,8 lb	16 / 232	37,5 / 545	2	17,5	116	-	-	-	-	-
80	3	105	EN 1092-4* PN 10/16 Type B	Aluminium	5340C-11**	2,0 kg / 4,4 lb	10 / 145	15 / 220	2	14	112	-	-	-	-	-
80	3	105	EN 1092-3* PN 10/16 Type B	Brass	5340C-22**	5,2 kg / 11,5 lb	10 / 145	15 / 220	2	14	112	-	-	-	-	-
80	3	105	EN 1092-1 PN 25/40 Type B	Stainless Steel	5340D-44**	4,6 kg / 10,1 lb	16 / 232	37,5 / 545	2	23,5	116	-	-	-	-	-
80	3	105	ANSI B16.5 3" Class 150	Aluminium	5405C-11**	1,5 kg / 3,3 lb	10 / 145	15 / 220	2	14	112	-	-	-	-	-
80	3	105	ANSI B16.5 3" Class 150	Brass	5405C-22**	4,6 kg / 10,1 lb	10 / 145	15 / 220	2	14	112	-	-	-	-	-
80	3	105	ANSI B16.5 3" Class 150	Stainless Steel	5405D-44**	4,0 kg / 8,8 lb	16 / 232	37,5 / 545	2	23,5	116	-	-	-	-	-
80	3	105	TW1 (DIN 28459)	Aluminium	5330C-11**	1,3 kg / 2,9 lb	10 / 145	15 / 220	1	14	112	-	-	-	-	-
80	3	105	TW1 (DIN 28459)	Brass	5330C-22**	4,3 kg / 9,5 lb	10 / 145	15 / 220	1	14	112	-	-	-	-	-
80	3	105	TW1 (DIN 28459)	Stainless Steel	5330D-44**	3,3 kg / 7,3 lb	10 / 145	37,5 / 545	1	14	116	-	-	-	-	-
100	4	105	TW3 (DIN 28459)	Aluminium	7137C-11**	1,4 kg / 3,1lb	10 / 145	15 / 220	1	14	112	-	-	-	-	-
100	4	105	TW3 (DIN 28459)	Brass	7137C-22**	4,5 kg / 9,9 lb	10 / 145	15 / 220	1	14	112	-	-	-	-	-
100	4	105	TW3 (DIN 28459)	Stainless Steel	7137D -44**	3,3 kg / 7,3 lb	10 / 145	15 / 218	3	14	116	-	-	-	-	-

## TODO-MATIC Tank units - coupling Ø 119



Max coupling pressure: 7 bar / 102 psi.

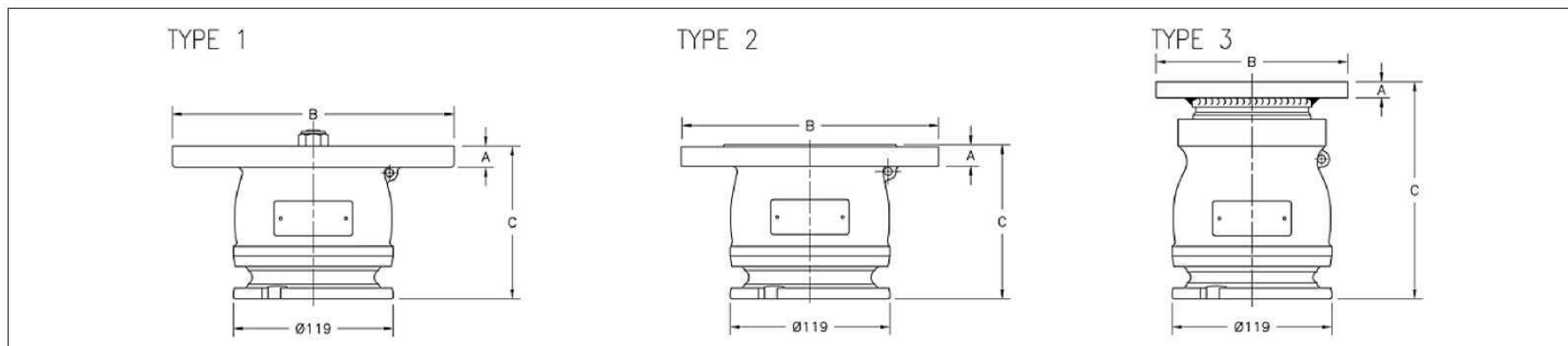
\* NPT thread is a tapered pipe thread, tightening on the tread. Therefore there is no flat seal.

\*\*Sealing material, see page 4

DN	NPS	D.Ø mm	B (connection)	Material	Code No.	Weight	WP Bar/Psi	TP Bar/Psi	Type	A	C	D	E	F	G	H
80	3	119	BSP (ISO 228 - G 3)	Aluminium	5531C-11**	1,2 kg / 2,6 lb	10 / 145	15 / 220	-	22	134	101	110	-	-	-
80	3	119	BSP (ISO 228 - G 3)	Brass	5531C-22**	3,5 kg / 7,7 lb	10 / 145	15 / 220	-	22	134	101	110	-	-	-
80	3	119	BSP (ISO 228 - G 3)	Stainless Steel	5531X-44**	3,7 kg / 8,2 lb	25 / 365	37,5 / 545	-	22	134	101	110	-	-	-
80	3	119	NPT (ANSI B2.1)*	Aluminium	7474C-11**	1,2 kg / 2,6 lb	10 / 145	15 / 220	-	32	144	101	110	-	-	-
80	3	119	NPT (ANSI B2.1)*	Brass	7474C-22**	3,8 kg / 8,4 lb	10 / 145	15 / 220	-	32	144	101	110	-	-	-
80	3	119	NPT (ANSI B2.1)*	Stainless Steel	7474X-44**	4,0 kg / 8,8 lb	25 / 365	37,5 / 545	-	32	144	101	110	-	-	-



## TODO-MATIC Tank units - coupling Ø 119

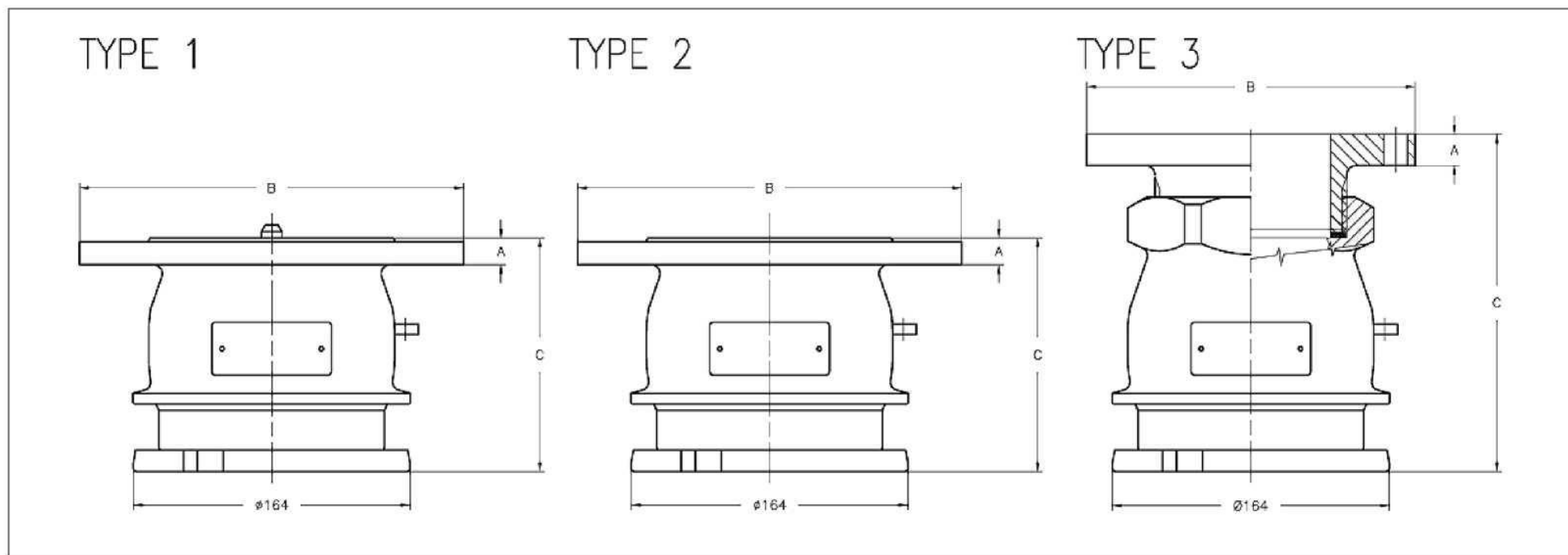


Max coupling pressure: 7 bar / 102 psi. \*Drilled according to Standard only

\*\*Sealing material, see page 4

DN	NPS	D.Ø mm	B (connection)	Material	Code No.	Weight	WP Bar/Psi	TP Bar/Psi	Type	A	C	D	E	F	G	H
80	3	119	Undrilled Ø220	Aluminium	5500C-11**	1,8 kg / 4,0 lb	10 / 145	15 / 220	1	14	112	-	-	-	-	-
80	3	119	Undrilled Ø220	Brass	5500C-22**	5,6 kg / 12,3 lb	10 / 145	15 / 220	1	14	112	-	-	-	-	-
80	3	119	Undrilled Ø220	Stainless Steel	5500D-44**	7,4 kg / 16,3 lb	25 / 365	37,5 / 545	1	16	115	-	-	-	-	-
80	3	119	ANSI B16.5 3" Class 150	Aluminium	5505C-11**	1,8 kg / 4,0 lb	10 / 145	15 / 220	1	14	112	-	-	-	-	-
80	3	119	ANSI B16.5 3" Class 150	Brass	5505C-22**	5,6 kg / 12,3 lb	10 / 145	15 / 220	1	14	112	-	-	-	-	-
80	3	119	ANSI B16.5 3" Class 150	Stainless Steel	5505D-44**	7,4 kg / 16,3 lb	16 / 232	37,5 / 545	2	16	115	-	-	-	-	-
80	3	119	EN 1092-4* PN 10/16	Aluminium	5544C-11**	1,7 kg / 3,7 lb	10 / 145	15 / 220	1	14	112	-	-	-	-	-
80	3	119	EN 1092-3* PN 10/16 Type B	Brass	5544C-22**	5,0 kg / 11,0 lb	10 / 145	15 / 220	1	14	112	-	-	-	-	-
80	3	119	EN 1092-1 PN 10/16 Type B	Stainless Steel	5544D-44**	6,0 kg / 13,2 lb	16 / 232	37,5 / 545	2	16	115	-	-	-	-	-
80	3	119	TW1 (DIN 28459)	Aluminium	5592C-11**	1,5 kg / 3,3 lb	10 / 145	15 / 220	1	14	112	-	-	-	-	-
80	3	119	TW1 (DIN 28459)	Brass	5592C-22**	4,2 kg / 9,3 lb	10 / 145	15 / 220	1	14	112	-	-	-	-	-
80	3	119	TW1 (DIN 28459)	Stainless Steel	5592D-44**	6,7 kg / 14,8 lb	10 / 145	37,5 / 545	1	16	115	-	-	-	-	-
100	4	119	EN 1092-1 PN 10/16 Type B	Stainless Steel	6855D-44**	7,0 kg / 15,4 lb	16 / 232	37,5 / 545	2	16	115	-	-	-	-	-
80	3	119	ANSI B16.5 3" Class 300	Stainless Steel	7505D-44**	7,2 kg / 15,9 lb	25 / 365	37,5 / 545	2	29	115	-	-	-	-	-
80	3	119	EN 1092-1 PN 25/40 Type F	Stainless Steel	5498D-44**	7,1 kg / 15,7 lb	25 / 365	37,5 / 545	2	29	115	-	-	-	-	-
80	3	119	EN 1092-1 PN 25/40 Type B	Stainless Steel	5503D-44**	8,4 kg / 18,5 lb	25 / 365	37,5 / 545	2	29	115	-	-	-	-	-
80	3	119	EN 1092-1 PN 25/40 Type E	Stainless Steel	5501D-44**	8,0 kg / 17,6 lb	25 / 365	37,5 / 545	2	29	115	-	-	-	-	-
100	4	119	TW3 (DIN 28459)	Aluminium	5546C-11**	1,7 kg / 3,7 lb	10 / 145	15 / 220	1	14	112	-	-	-	-	-
100	4	119	TW3 (DIN 28459)	Brass	5546C-22**	4,4 kg / 9,7 lb	10 / 145	15 / 220	1	14	112	-	-	-	-	-
100	4	119	TW3 (DIN 28459)	Stainless Steel	5546D-44**	6,5 kg / 14,3 lb	10 / 145	37,5 / 545	1	16	115	-	-	-	-	-
100	4	119	T.T.M.A (RP No. 28)	Aluminium	5820C-11**	1,7 kg / 3,7 lb	10 / 145	15 / 220	1	14	112	-	-	-	-	-
100	4	119	T.T.M.A (RP No. 28)	Brass	5820C-22**	4,4 kg / 9,7 lb	10 / 145	15 / 220	1	14	112	-	-	-	-	-
100	4	119	T.T.M.A (RP No. 28)	Stainless Steel	5820D-44**	3,9 kg / 8,6 lb	10 / 145	37,5 / 545	1	16	115	-	-	-	-	-
80	3	119	T.T.M.A (RP No. 28)	Aluminium	5819C-11**	1,5 kg / 3,3 lb	10 / 145	15 / 220	3	12	162	-	-	-	-	-

## TODO-MATIC Tank units - coupling Ø 164

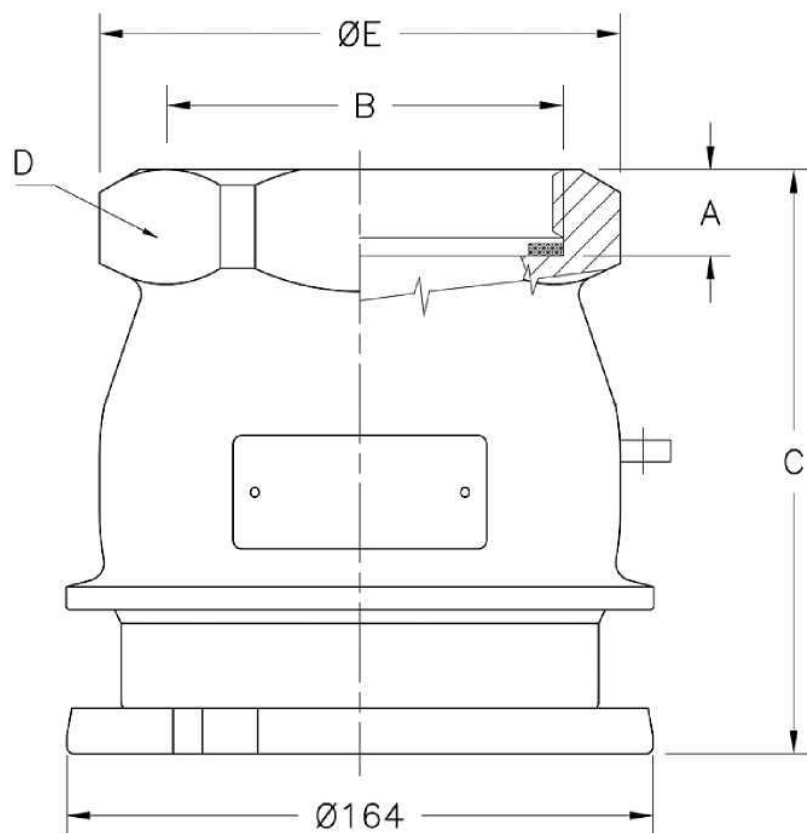


Max coupling pressure: 7 bar / 102 psi. \*Drilled according to Standard only

\*\* Sealing material, see page 4

DN	NPS	D.Ø mm	B (connection)	Material	Code No.	Weight	WP Bar/Psi	TP Bar/Psi	Type	A	C	D	E	F	G	H
100	4	164	ANSI B16.5 4" Class 150	Aluminium	5600-11**	4,5 kg / 9,9 lb	10 / 145	15 / 220	1	20	138	-	-	-	-	-
100	4	164	ANSI B16.5 4" Class 150	Brass	5600-22**	10,9 kg / 24,0 lb	10 / 145	15 / 220	1	20	138	-	-	-	-	-
100	4	164	ANSI B16.5 4" Class 150	Stainless Steel	5800D-44**	12,0 kg / 26,5 lb	16 / 232	37,5 / 545	2	25	148	-	-	-	-	-
100	4	164	EN 1092-4* PN 10/16 Type B	Aluminium	5695-11**	4,3 kg / 9,5 lb	10 / 145	15 / 220	1	20	138	-	-	-	-	-
100	4	164	EN 1092-3* PN 10/16 Type B	Brass	5695-22**	10,7 kg / 23,6 lb	10 / 145	15 / 220	1	20	138	-	-	-	-	-
100	4	164	EN 1092-1 PN 10/16 Type B	Stainless Steel	6600D-44**	11,7 kg / 25,8 lb	16 / 232	37,5 / 545	2	25	148	-	-	-	-	-
100	4	164	TW3 (DIN 28459)	Aluminium	5696-11**	4,3 kg / 9,5 lb	10 / 145	15 / 220	3	15	192	-	-	-	-	-
100	4	164	TW3 (DIN 28459)	Brass	5696-22**	10,0 kg / 22,0 lb	10 / 145	15 / 220	3	15	192	-	-	-	-	-
100	4	164	Undrilled Ø230	Aluminium	5700-11**	4,6 kg / 10,1 lb	10 / 145	15 / 220	1	20	138	-	-	-	-	-
100	4	164	Undrilled Ø230	Brass	5700-22**	11,9 kg / 26,2 lb	10 / 145	15 / 220	1	20	138	-	-	-	-	-
100	4	164	Undrilled Ø230	Stainless Steel	6300D-44**	12,8 kg / 28,2 lb	25 / 365	37,5 / 545	2	25	148	-	-	-	-	-
100	4	164	T.T.M.A (RP No. 28)	Stainless Steel	5674D-44**	10,8 kg / 23,8 lb	10 / 145	37,5 / 545	2	25	140	-	-	-	-	-
100	4	164	T.T.M.A (RP No. 28)	Aluminium	7147-11**	4,3 kg / 9,5 lb	10 / 145	15 / 220	3	15	192	-	-	-	-	-

## TODO-MATIC Tank units - coupling Ø 164



Max coupling pressure: 7 bar / 102 psi.

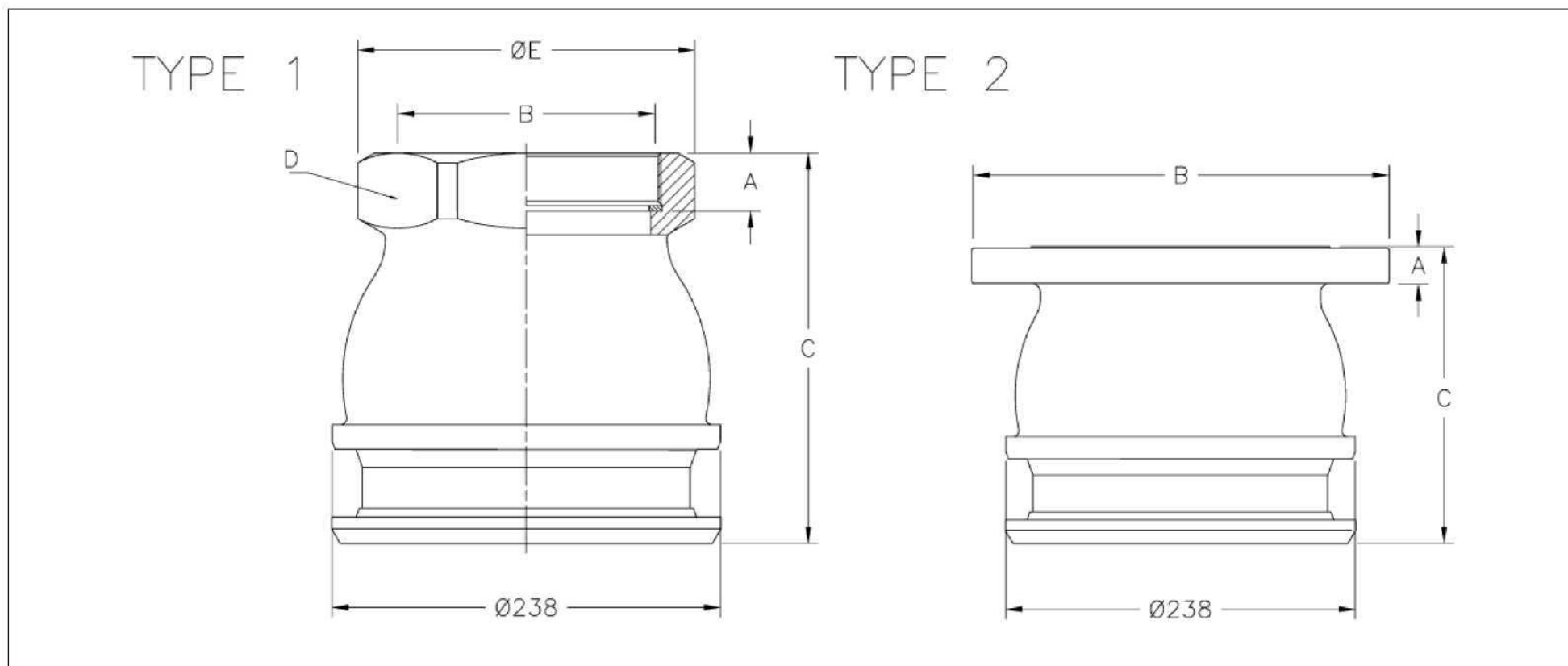
\* NPT thread is a tapered pipe thread, tightening on the tread. Therefore there is no flat seal.

\*\* Sealing material, see page 4

\*\*\* A = Changeable coupling flange. B = Unchangeable coupling flange.

DN	NPS	D.Ø mm	B (connection)	Material	Code No.	Weight	WP Bar/Psi	TP Bar/Psi	Type	A	C	D	E	F	G	H
100	4	164	BSP (ISO 228-G 4)	Aluminium	5631-11**	3,3 kg / 7,3 lb	10 / 145	15 / 220	A ***	24	162	130	162	-	-	-
100	4	164	BSP (ISO 228-G 4)	Brass	5631-22**	7,4 kg / 16,3 lb	10 / 145	15 / 220	A ***	24	162	130	162	-	-	-
100	4	164	BSP (ISO 228-G 4)	Stainless Steel	5830A-44**	6,9 kg / 15,2 lb	25 / 365	37,5 / 545	B ***	24	164	130	164	-	-	-
100	4	164	NPT (ANSI B2.1) *	Aluminium	7476-11**	3,3 kg / 7,3 lb	10 / 145	15 / 220	A ***	34	172	130	172	-	-	-
100	4	164	NPT (ANSI B2.1) *	Brass	7476-22**	7,4 kg / 16,3 lb	10 / 145	15 / 220	A ***	34	172	130	172	-	-	-
100	4	164	NPT (ANSI B2.1) *	Stainless Steel	7480A-44**	7,3 kg / 16,1 lb	25 / 365	37,5 / 545	B ***	34	172	130	173	-	-	-

## TODO-MATIC Tank units - coupling Ø 238



Max coupling pressure: 7 bar / 102 psi.

\* NPT thread is a tapered pipe thread, tightening on the tread. Therefore there is no flat seal.

\*\*\*Drilled according to Standard only

\*\* Sealing material, see page 4

DN	NPS	D.Ø mm	B (connection)	Material	Code No.	Weight	WP Bar/Psi	TP Bar/Psi	Type	A	C	D	E	F	G	H
150	6	238	6" BSP (ISO 228-G 6)	Aluminium	7210-11**	11,5 kg / 25,4 lb	10 / 145	15 / 220	1	35	239	190	200	-	-	-
150	6	238	6" BSP (ISO 228-G 6)	Brass	7210-22**	25,0 kg / 55,1 lb	10 / 145	15 / 220	1	35	239	190	200	-	-	-
150	6	238	6" NPT (ANSI B2.1) *	Aluminium	7211-11**	10,7 kg / 23,6 lb	10 / 145	15 / 220	1	40	239	190	200	-	-	-
150	6	238	6" NPT (ANSI B2.1)*	Brass	7211-22**	25,0 kg / 55,1 lb	10 / 145	15 / 220	1	40	239	190	200	-	-	-
150	6	238	EN 1092-4*** PN 10/16 Type B	Aluminium	7212-11**	13,0 kg / 28,7 lb	10 / 145	15 / 220	2	24	200	-	-	-	-	-
150	6	238	EN 1092-3*** PN 10/16 Type B	Brass	7212-22**	28,0 kg / 61,7 lb	10 / 145	15 / 220	2	24	200	-	-	-	-	-
150	6	238	EN 1092-1 PN 10/16 Type B	Stainless Steel	7212A-44**	26,0 kg / 57,3 lb	16 / 232	24 / 350	2	24	200	-	-	-	-	-
150	6	238	ANSI B16.5 6" Class 150	Aluminium	7212-11**	13,0 kg / 28,7 lb	10 / 145	15 / 220	2	24	200	-	-	-	-	-
150	6	238	ANSI B16.5 6" Class 150	Brass	7212-22**	28,0 kg / 61,7 lb	10 / 145	15 / 220	2	24	200	-	-	-	-	-
150	6	238	ANSI B16.5 6" Class 150	Stainless Steel	7212A-44**	26,0 kg / 57,3 lb	16 / 232	24 / 350	2	24	200	-	-	-	-	-